

This application note guides you to debug your system design using dynamic information provided during software execution by the Nios® II processor. A short tutorial demonstrates how to use the Nios II plug-in, SignalTap® II Logic Analyzer, and Nios II Software Build Tools (SBT) for Eclipse to trigger on, capture, and trace the signals which illuminate the LEDs.

Introduction

As FPGA system designs become more complex and system focused—with increasing numbers of processors, peripherals, buses, and bridges—designers need better and more sophisticated system-level debug tools. Altera's SignalTap II Embedded Logic Analyzer provides real-time hardware debugging capabilities by embedding a logic analyzer in the system. The Nios II plug-in for the SignalTap II Embedded Logic Analyzer extends the SignalTap II system debugging capabilities by enabling the capture of a Nios II processor's program execution.

The Nios II plug-in extends the capabilities of the SignalTap II Embedded Logic Analyzer, enabling you to easily trigger on and capture instruction trace data that the Nios II processor core executes. You can specify an instruction-trace trigger, which triggers the SignalTap II Logic Analyzer when the processor reaches a specific address, by entering a symbol name from your program, or specify your own SignalTap II trigger condition. The Nios II plug-in automatically correlates the processor trace with a specified software image, providing you with a symbol name and an offset view of the trace, along with decoded Nios II machine language operation codes (opcodes).

Prerequisites

The goal of this application note is to teach you how to use the Nios II plug-in in the SignalTap II framework. This application note assumes that you are familiar with certain Altera® software tools, including the basic use of the SignalTap II Embedded Logic Analyzer.

This application note assumes that you are familiar with the use of the Quartus® II software, Qsys, and Nios II embedded processor, and the basic capabilities and features of the SignalTap II Embedded Logic Analyzer. Because the Nios II plug-in is an extension of the SignalTap II Logic Analyzer, the basic use of the plug-in is nearly identical to that of the SignalTap II Logic Analyzer.

In addition, the tutorial in this application note assumes you have access to certain Altera tools and intellectual property (IP).



101 Innovation Drive
San Jose, CA 95134
www.altera.com

© 2011 Altera Corporation. All rights reserved. ALTERA, ARRIA, CYCLONE, HARDCOPY, MAX, MEGACORE, NIOS, QUARTUS and STRATIX are Reg. U.S. Pat. & Tm. Off. and/or trademarks of Altera Corporation in the U.S. and other countries. All other trademarks and service marks are the property of their respective holders as described at www.altera.com/common/legal.html. Altera warrants performance of its semiconductor products to current specifications in accordance with Altera's standard warranty, but reserves the right to make changes to any products and services at any time without notice. Altera assumes no responsibility or liability arising out of the application or use of any information, product, or service described herein except as expressly agreed to in writing by Altera. Altera customers are advised to obtain the latest version of device specifications before relying on any published information and before placing orders for products or services.





For more information about the SignalTap II configuration options and user modes, refer to the *Design Debugging Using the SignalTap II Embedded Logic Analyzer* chapter in volume 3 of the *Quartus II Handbook*.

Tool Requirements

Using the Nios II plug-in requires the following tools:

- Quartus II software version 11.0 or later
- Nios II Embedded Development Suite 11.0 or later

Completing the tutorial at the end of this application note requires the following additional resources:

- Nios II Development Kit
- USB-Blaster™ cable
- The **an446_signal_tap_test.zip** file (available as a downloadable file with this application note)

For more detailed information about the hardware and software required for the tutorial, refer to [“Tutorial: Using the Nios II Plug-In” on page 10](#).

The Nios II Plug-In

The Nios II plug-in is a debugging extension to the SignalTap II Embedded Logic Analyzer. It enables you to capture the opcodes executed by a Nios II embedded processor. The Nios II plug-in operates by instantiating debug nodes inside the Nios II processor's ALU. The Nios II plug-in supports all variants of the Nios II processor core.

Each Nios II plug-in instantiation is associated with a specific Nios II processor, and can operate with other Nios II plug-in instantiations and with other SignalTap II instances.

You can specify the following types of trigger conditions:

- Instruction address
- Symbol name (function) present in the Nios II Executable and Loadable Format (.elf) file
- Symbol name plus an offset

The plug-in decodes all the instructions to a human-readable format. Instruction addresses translate to symbol name plus address offset (if possible), and instruction opcodes translate to their equivalent assembly language mnemonics.

Quartus II Project and SignalTap II Logic Analyzer Set-Up

You must create and configure a SignalTap II File (.stp) in your Quartus II project for use with the Nios II plug-in. To add the .stp to your system, follow these steps:

1. On the Quartus II File menu, click **New**.
2. In the **New** dialog box, in the **Verification/Debugging Files** category, click **SignalTap II Logic Analyzer File**.
3. Click **OK**.

Alternatively, you can create a new or existing .stp by performing the following steps:

- On the Quartus II Tools menu, click **SignalTap II Logic Analyzer**.

After you perform these steps, a SignalTap II window appears.

The Nios II plug-in currently does not support Quartus II projects if you enabled the incremental compilation option. Therefore, you must disable incremental compilation in your Quartus II project. To disable incremental compilation, follow these steps:

1. On the Assignments menu, click **Settings**.
2. In the **Settings** dialog box, expand **Compilation Process Settings** and click **Incremental Compilation**.
3. Under **Incremental Compilation**, select **Off**.
4. Click **OK**.

Adding the Nios II Plug-In

When you add the Nios II plug-in to your system, you must specify the Nios II processor you wish to monitor and, optionally, the processor's software image (an .elf). The Nios II plug-in processes the .elf to extract symbol information. The plug-in uses the .elf during configuration to specify trigger conditions.

To add the Nios II plug-in to your system, follow these steps:

1. In the Quartus II window, on the Processing menu, point to **Start**, and then click **Start Analysis & Elaboration**.
2. In the SignalTap II window, right-click in the SignalTap II node list. Point to **Add Nodes with Plug-In** and click **Nios II**. The **Select Hierarchy Level** dialog box appears.
3. In the **Select Hierarchy Level** dialog box, select the Nios II processor instance you want to monitor with the plug-in.
4. Click **OK**. The **Plug-In Options** dialog box appears.
5. In the **Plug-In Options** dialog box, optionally specify the location of the .elf.



Two Nios II plug-in instances cannot monitor the same Nios II processor. If you attempt to add more than one instance of the Nios II plug-in per processor, an error message appears.

6. Click **OK**.

You can change the **.elf** that the Nios II plug-in uses at any time by performing the following steps:

1. In the SignalTap II window, click the **Setup** tab.
2. In the SignalTap II node list, right-click on the Nios II plug-in instance you want to modify and click **Plug-In Options**. The configuration options for the Nios II plug-in appear.



The Nios II SBT for Eclipse generates the **.elf** during the software build process. Usually, you can locate the **.elf** for your software project in the **software/app/** directory that the Nios II SBT for Eclipse created. You can also create an **.elf** in the Nios II SBT flow.

Specifying Trigger Conditions

Unlike standard SignalTap II Logic Analyzer trigger conditions, which are described as hardware or logic events, the Nios II plug-in's trigger conditions are specified as instruction addresses. The Nios II plug-in triggers when the Nios II processor reaches the specified instruction address during program execution.

Basic Triggering

In basic triggering mode, the Nios II plug-in uses a processor-visible system address as the trigger to begin trace capture. To set the trigger, click the **Trigger Conditions** column in the Nios II plug-in and type an instruction address.

You can type any of the following supported trigger conditions:

- Hexadecimal integer: `0x<32-bit number>` (for example, `0x20000000`)
- **.elf** symbol: `<string>` —An alphanumeric C/C++ function name that appears as a symbol in the **.elf** (for example, `f00`)
- **.elf** symbol + offset: `<string>+<hexadecimal number>` (for example, `f00+0x80`)

To specify a trigger condition with a symbol name option you must configure the Nios II plug-in with a Nios II processor **.elf**. If the **.elf** does not contain the specified symbol name, an error message appears and the trigger condition field is set to an undefined value. When you type a value in the trigger condition field, the Nios II plug-in examines the contents of the reference **.elf** for any changes. This check guarantees that the trigger conditions remain synchronized with the **.elf** contents, even if the **.elf** is changing frequently, such as during software debugging.

To determine the symbols in the **.elf**, use one of the following methods to generate an **objdump** file:

- Turn on the `CREATE_OBJDUMP` option in the makefile, and then build the project.
- After you create the **.elf**, in the Nios II command shell, type the following command:

```
nios2-elf-objdump -s <filename>.elf ↵
```

For more information refer to [“Building the Nios II Software” on page 11](#).



You can specify your standard SignalTap II Logic Analyzer trigger conditions in the SignalTap II window by right-clicking on the **Trigger Conditions** column and selecting a trigger pattern. However, you should enter your Nios II plug-in trigger conditions manually for clarity.

Not specifying an address trigger condition for the Nios II plug-in has the same effect as not specifying a trigger condition in a normal SignalTap II instance. If you specify no trigger condition, the logic analyzer triggers immediately and the displayed data is not useful.

Multiple Triggers

The Nios II plug-in supports the SignalTap II multiple trigger conditions feature, and are incorporated as part of a more complex capture sequence. You can include the Nios II plug-in trigger pattern as a part of any SignalTap II trigger condition.

Advanced Triggers

You can create complex triggers with the SignalTap II Advanced Trigger option. However, the Nios II plug-in loses much of its benefit when you use this option. The signal groupings contained in the Nios II plug-in appear in the Advanced Trigger Configuration Editor, in which they are treated as normal signals. The Advanced Trigger Configuration Editor lacks the Nios II plug-in's capability to trigger by address or symbol.

Power-Up Triggers

You can use the Nios II plug-in with the SignalTap II power-up trigger feature. Because power-up triggers are enabled before the SignalTap II Logic Analyzer is started manually, they are useful for monitoring systems in which the Nios II processor operates in self-booting mode, that is, immediately after configuring the FPGA. In these cases, the Nios II processor begins software execution directly from system memory without the aid of a debugger to start, stop, and load the processor's run-time memory.

Assigning the Acquisition Clock

You must specify a clock signal to control the acquisition of samples. Specify the clock signal in the Signal Configuration pane of the SignalTap II window. Altera recommends that you select the clock signal that the Nios II processor uses as the SignalTap II acquisition clock. Using the Nios II processor clock ensures that the captured instruction trace data accurately corresponds to the instruction execution of the Nios II processor.

Selecting Sample Depth, Memory Type, and Buffer Acquisition Mode

For the Nios II plug-in, just as for the SignalTap II Logic Analyzer, you must configure the sample depth, memory type, and buffer acquisition mode for the capture session. These configuration options behave as they would in a normal SignalTap II Logic Analyzer capture session, and are accessible through the Signal Configuration pane.

Exercise care when selecting the **Sample Depth** size. The Nios II plug-in requires many signals to be captured for every sample taken, quickly depleting available memory resources. Use the SignalTap II built-in resource estimator to gain a better understanding of how adjusting the sample depth parameter impacts your design.

Design Compilation and Programming the Target Device

The Nios II plug-in is compiled in the Quartus II design with the SignalTap II Logic Analyzer. However, because the Nios II plug-in does not support the Quartus II incremental compilation option, you must perform a full compilation of the Quartus II project after adding the plug-in.

After compilation, you can program the FPGA target device with the SRAM Object File (.sof) from the SignalTap II window just as you would if you are not using a Nios II plug-in.

Running a Capture Session




You can perform data acquisition with the Nios II plug-in the same way that you gather data with the SignalTap II Logic Analyzer. First, program the FPGA with the .sof that the Quartus II software generates. Next, run SignalTap II analysis, either manually through the SignalTap II Instance Manager, or automatically when the FPGA is programmed and power-up triggering is selected. If the system meets the trigger conditions, the SignalTap II Logic Analyzer displays the acquired data in the SignalTap II results window.

You can use the Nios II plug-in in two different types of data capture sessions, one with the Nios II SBT for Eclipse and the other in stand-alone mode.

Performing Data Capture with the Nios II SBT for Eclipse

To use the Nios II plug-in with the Nios II SBT for Eclipse, you must manually download a Nios II software image and control the operation of the processor through the debugger. You can perform this type of capture session when you are developing and debugging a Nios II software application.

To run a SignalTap II capture session with the Nios II processor controlled by the Nios II SBT for Eclipse, follow these steps:

1. In the SignalTap II window, program the FPGA target device with the **.sof** generated by the Quartus II software, by performing the following steps:
 - a. On the Hardware menu, select the programming cable that is connected to your Nios II development board.
 - b. In the **SOF Manager** field, click **browse**.
 - c. In the **Select Programming File** dialog box, select the **.sof** generated for your project.
 - d. Click **Open**. The **Program Device** button is now available.
 - e. Click the **Program Device** button to download the **.sof** to the FPGA. 
2. In the SignalTap II window, in the Instance Manager pane, click the **Run Analysis** button to start the logic analyzer capture session. 
3. In the Nios II SBT for Eclipse, right-click on the name of the software project you want to run on the Nios II processor and click **Debug As**, then **Nios II Hardware**. This action starts the debugger, downloads the **.elf** into system memory, and halts the processor on the entry point to `main()`.
4. On the **Debug** tab, click the **Resume** button to start the Nios II processor execution. 

The SignalTap II Logic Analyzer continues running until the trigger condition specified in the Nios II plug-in is reached. While the SignalTap II Logic Analyzer is running, you can use the Nios II SBT for Eclipse debug features safely (for example, you can set breakpoints and stop the processor).

When you launch the debugger, the Nios II plug-in is triggered if the processor advances to the trigger address. If the start-up breakpoint location occurs after the trigger address location specified for the Nios II plug-in, it may cause a false hit by the debugger. To change the breakpoint start-up location for the debugger, follow these steps in the Nios II SBT for Eclipse:

1. On the **Run** menu, click **Debug Configurations**. The Debug Configurations window appears.
2. In the Debug Configurations window, click the **Debugger** tab.
3. Select the breakpoint location(s) from which you want the Nios II SBT for Eclipse debugger run, and click **Apply**.



Alternatively, instead of using the **Debug As** option, you can use the **Run As** option. Using the **Run As** option causes the Nios II SBT for Eclipse to download and run the software image from system memory without starting the debugger feature of the Nios II SBT for Eclipse.

Performing Data Capture Without External Software Download

If your Nios II processor based system is configured to be self-booting, without the need for an external software download, and you have selected the SignalTap II power-up trigger feature, the SignalTap II Logic Analyzer begins running automatically when the FPGA is programmed.

In this case, the SignalTap II Logic Analyzer may already have captured data available. To determine if captured data is available, or if the logic analyzer is still running, click **Run Analysis** in the SignalTap II instance manager.



For more information about creating a self-booting Nios II processor system, refer to the *Nios II Software Developer's Handbook*.

Analyzing Results

The Nios II plug-in allows you to view the captured Nios II processor trace data. This section describes several of the post-capture features of the Nios II plug-in.

Viewing the Data

Captured SignalTap II data appears in the **Data** tab of the SignalTap II window. Every sample captured by the Nios II plug-in displays the following information:

- **Address**—The instruction address location in hexadecimal format. Additionally, if an **.elf** was specified during plug-in configuration, the instruction address may be further resolved into symbol name and offset.
- **Assembly Language Mnemonic**—The Nios II assembly language equivalent of the binary opcode for the instruction.

If you specified an **.elf** during the plug-in configuration, the software reexamines the file immediately after data acquisition completes, and converts the instruction addresses to the symbol name and offset representation. This reexamination helps to safeguard against the inadvertent use of old software images.

Using the SignalTap II tab controls, you can scroll through the program execution of the Nios II processor. If the specified acquisition clock corresponds to the Nios II processor clock, every rising clock edge corresponds to a new instruction cycle.

You may notice one or more “**empty**” instruction entries in the trace data gathered by the Nios II plug-in. These entries indicate that no instruction was executed by the Nios II processor during that particular clock cycle. This behavior is normal, and can occur for the following reasons:

- **Cache Miss**—The requested instruction address location generates a miss in the instruction cache, and additional clock cycles are required to fill the cache line and return the instruction.
- **Memory Contention or Speed**—The instruction address location is in memory that requires multiple clock cycles to access, or in memory that is currently controlled by another peripheral or processor.

You can also view the Nios II plug-in trace data in the SignalTap II list file format. In this tabular format, the trace samples are displayed chronologically in rows, decoded by sample number and the associated assembly language mnemonic. The list file format is useful because it is similar to the output format of the `nios2-elf-objdump` command, simplifying the analysis process. To create the SignalTap II list file, on the File menu, point to **Create/Update** and click **Create SignalTap II List File**.



Some Nios II processor instructions consume multiple clock cycles when they are executed. For more information about the number of clock cycles required for a particular instruction, refer to the *Nios II Core Implementation Details* chapter of the *Nios II Processor Reference Handbook*.

Correlating Trace Data to the .elf of the Processor

You can compare the captured Nios II plug-in instruction trace to the software image executed by the Nios II processor by examining the contents of the **objdump** file.

You can use the `nios2-elf-objdump` command to create the **objdump** file. This command copies the **.elf** of the processor to the human-readable format of the **objdump** that contains C/C++ code fragments, symbolic function names, assembly instructions, and address locations.

The `nios2-elf-objdump` command-line executable is included as a part of the Nios II Embedded Design Suite. You can configure the tool with a series of command line options. For a list of conversion options for the `nios2-elf-objdump` command, in a Nios II command shell, type the following command:

```
nios2-elf-objdump --help ↵
```

Although the **objdump** file contains vast amounts of information decoded from the **.elf**, the Nios II processor's instructions appear one per line in this file, in the following format:

<Address>: <opcode> <Assembly Mnemonic>

For example, a valid instruction is:

```
200a8c0: e0800417 ldw r2,16(fp)
```

Saving and Converting Captured Data

You can save any data captured by the Nios II plug-in with the SignalTap II data log feature. The Nios II plug-in data sets are stored with the processor's **.elf** information. To enable data logging, turn on the **Data Log** option in the SignalTap II window.

The Nios II plug-in also supports the SignalTap II data conversion feature. To export captured data, on the File menu, click **Export** and specify the **File Name**, the **Export Format**, and the **Clock Period**.

Tutorial: Using the Nios II Plug-In

This tutorial shows you how to use the Nios II plug-in for the SignalTap II Logic Analyzer to trace the signals which illuminate the LEDs on a Nios II development board. The tutorial explains how to set up and configure the Nios II plug-in, how to use the plug-in during the Nios II software debug cycle (Nios II SBT for Eclipse), and how to perform an analysis of the data captured using the `.elf` as a reference.

Hardware and Software Requirements

To complete this tutorial you must have the following:

- Quartus II software version 11.0 or higher—Both the Quartus II Web Edition and the fully licensed version works with the design example.
- Nios II Embedded Development Suite (EDS) version 11.0 or higher
- Nios II Development Kit—You can use any Altera Nios II development kit listed on the [Nios II Ethernet Standard Design Example](#) page. The following development kits support this design:
 - Nios II Embedded Evaluation Kit, Cyclone III Edition
 - Cyclone III FPGA Development Kit
 - Stratix IV GX FPGA Development Kits
- Software file—Download `an446_signal_tap_test.zip` to a folder on your hard drive. This software file can be found on www.altera.com/support/examples/nios2/exm-debug-signalap.html.
- USB-Blaster cable

Hardware Project Set-Up

You must first create the system hardware containing the Nios II processor and configure the Quartus II project for the Nios II plug-in.

Setting Up the Development Board

Make sure that your Nios II development board has power and is connected to your workstation through the USB-Blaster cable.

Configuring the Quartus II Software

To configure the Quartus II software, perform the following steps:

1. Download and extract the Nios II design example for your particular board to a location in which you can edit it. You can download the design example from the [Nios II Ethernet Standard Design Example](#) page.
2. Open the Quartus II software.
3. On the **File** menu, click **Open Project**.
4. Browse to the location where you extracted the design example. This is your project directory.
5. Select the `<your-nios2-board-type>.qpf` project file.

6. Click **Open**.

Generating Nios II Hardware

You must regenerate the downloaded design example using Qsys before you can properly compile the design example in the Quartus II software.

1. On the Tools menu, click **Qsys**.
2. In Qsys, open the **eth_std_main_system.qsys** file, then, click **Generate** under the **Generation** tab. This action rebuilds the hardware for the design example.



This operation may take a few minutes to complete.

3. After generation completes, quit Qsys.

Nios II Software Set-Up

You can now use the Nios II command shell to compile your software application and generate the **.elf** and **objdump** files. After the files are generated, you can identify the trigger location that you want to use for the Nios II plug-in.

Building the Nios II Software

To build the software application and generate an **objdump** file, perform the following steps:

1. Open a Nios II command shell.
2. Change to your project directory.
3. Copy the directory **count_binary** extracted from **an446_signal_tap_test.zip** to the **software/app** directory.
4. Copy the directory **count_binary_bsp** extracted from **an446_signal_tap_test.zip** to the **software/bsp** directory.
5. Change to the directory **software/app/count_binary**.
6. Create the application project makefile and build the project by typing the following command to run the script create-this-app:

```
./create-this-app ↵
```

This step also creates the **.elf** and **objdump** files.

Importing the Software Project to the Nios II SBT for Eclipse

To debug your project in the Nios II SBT for Eclipse, you must first import it. To import your software project to the Nios II SBT for Eclipse, perform the following steps:

1. Open the Nios II SBT for Eclipse.
2. On the File menu, click **Import**. The **Import** dialog box appears.
3. Expand the **Nios II Software Build Tools Project** folder.
4. Click **Import Nios II Software Build Tools Project**.
5. Click **Next**. The Import wizard appears.
6. Browse to your **software/app/count_binary** directory.
7. Click **OK**. The Import wizard fills the project name and path fields.
8. In the **Project name** field, change the project name to **count_binary** by typing `count_binary`.
9. Click **Finish**.

Finding the Instruction Trigger Condition

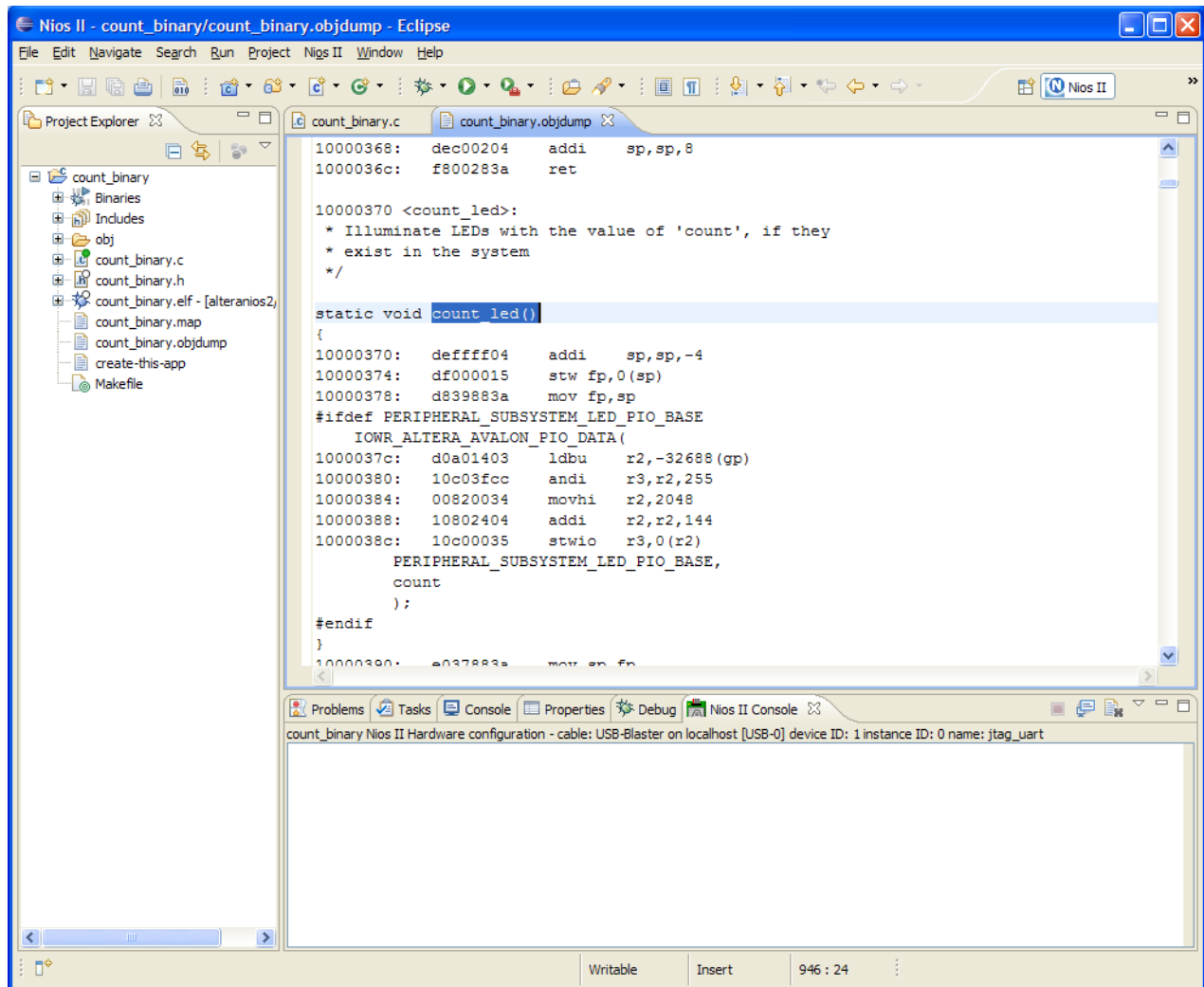
The Nios II plug-in should trigger on the first write to the LEDs Parallel Input/Output (PIO) peripheral, immediately after the entry point to the `main()` function. To identify the address of the assembly instruction that writes to the LEDs PIO, use the **objdump** file generated during software compilation.

The **objdump** file format contains a human-readable version of the program you just compiled. It shows the C instructions with the corresponding assembly instructions and their locations in the Nios II processor's address space. By locating the C instruction responsible for the write operation to the LEDs PIO, and then examining the assembly instructions that correspond to the C instruction, you can retrieve the address for the assembly instruction responsible for the write to the LEDs PIO. To do so, perform the following steps:

1. Expand the **count_binary** folder in the **Project Explorer** tab.
2. Right-click on the **count_binary.objdump** file and click **Open**.
3. On the Edit menu, click **Find/Replace**.
4. In the **Find** field of the **Find/Replace** dialog box, type `count_led()`. This string is the C function call to illuminate the LEDs with the value of the current count.

- Click **Find**. The line containing `count_led()` is highlighted, as shown in Figure 1.

Figure 1. Nios II Objdump View



- Scroll down until you find the line containing the `stwio r3,0(r2)` assembly instruction, and note the address to the left of the instruction. This instruction corresponds to the Nios II processor's write to the LEDs PIO. In this example, the address for this instruction is `0x1000038c`. However, in your particular case this address may be different. You can use the address of this instruction as a trigger for the Nios II plug-in to begin capturing instruction trace data.

In this example, when the Nios II processor executes the assembly instruction `stwio r3,0(r2)`, it writes to the LEDs PIO, which then illuminates the LEDs with the value of the current count.

You can identify the write instruction from the following indicators:

- The instruction appears in the block of assembly instructions that correspond to the following C instruction:
`IOWR_ALTERA_AVALON_PIO_DATA(PERIPHERAL_SUBSYSTEM_LED_PIO_BASE, count)`
- The other assembly instructions contained in the block perform operations only on the Nios II processor's registers.
- The assembly language instruction `stwio` performs a store-word operation to a peripheral.



For information about assembly language instructions, refer to the *Instruction Set Reference* chapter of the *Nios II Processor Reference Handbook*.

Configuring the Hardware Project

You can configure the Nios II plug-in for operation in the SignalTap II Logic Analyzer. To do so, perform the following steps in the Quartus II software:



In the project downloaded from the [Nios II Ethernet Standard Design Example](#) page, Incremental Compilation is already turned off.

1. On the Processing menu, point to **Start** and click **Start Analysis & Elaboration**.



This operation may take a few minutes to complete.

2. On the Tools menu, click **SignalTap II Logic Analyzer**.
3. Right-click in the SignalTap II node list. Point to **Add Nodes with Plug-In** and click **Nios II**. The **Select Hierarchy Level** dialog box appears.
4. In the **Select Hierarchy Level** dialog box, select `eth_std_main_system:eth_std_main_system_inst|eth_std_main_system_cpu:cpu`.
5. Click **OK**. The **Plug-In Options** dialog box appears.
6. In the **Plug-In Options** dialog box, click the browse button next to the **Setting** text field.
7. In the **Select File** dialog box, browse to the location of the `.elf` you compiled in the Nios II command shell. This `.elf` should be present in your `software/app/count_binary` directory and be named `count_binary.elf`. Select the file.
8. Click **Open**. The **Select File** dialog box closes.
9. Click **OK**. The **Plug-In Options** dialog box closes.
10. In the **Trigger Conditions** column for the Nios II plug-in, enter the address that corresponds to the write to the LEDs PIO. In this example, the address is `0x1000038c` for the trigger condition, as shown in [Figure 1 on page 13](#).

11. Add the LEDs PIO data signal to the node list by performing the following steps:
 - a. Right-click on the node list pane and click **Add Nodes**.
 - b. Ensure that the **Look in** field is set to `| top_level | eth_std_main_system:eth_std_main_system_inst |` and the **Named** field contains `*led*`.
 - c. Ensure that the **Filter** field is set to **SignalTap II: pre-synthesis**.
 - d. Click **List**.
 - e. In the **Nodes Found** pane, double-click the node `led_pio_external_connection_export`. The node is added to the **Selected Nodes** pane.
 - f. Click **OK**.
12. In the Signal Configuration pane, click the browse button next to the **Clock** text field to bring up the **Node Finder** dialog box.
13. In the **Node Finder** dialog box, perform the following steps:
 - a. Click the browse button next to the **Look in** text field. The **Select Hierarchy Level** dialog box appears.
 - b. In the **Select Hierarchy Level** dialog box, expand the hierarchy list under `| top_level | eth_std_main_system:eth_std_main_system_inst |`.
 - c. In the expanded hierarchy list, click the entity `eth_std_main_system_cpu:cpu`.
 - d. Click **OK** to close the list.
 - e. Ensure that the **Filter** field is set to **SignalTap II: pre-synthesis**.
 - f. In the Node Finder, click **List** to list all the nodes.
 - g. Double-click the node `clk` to add it to the **Selected Nodes** field.
 - h. Click **OK**. The **Node Finder** dialog box closes.
14. In the Signal Configuration pane, set the **Sample Depth** field to 256.
15. In the Quartus II window, on the Processing menu, click **Start Compilation** to build the hardware for the project. If you are prompted to save the SignalTap II instance and enable the SignalTap II Logic Analyzer for this project, click **Yes**.





You must save the **.stp** in your project directory.




The Quartus II hardware design may take a few minutes or longer to compile.

Running the Trace Capture Session

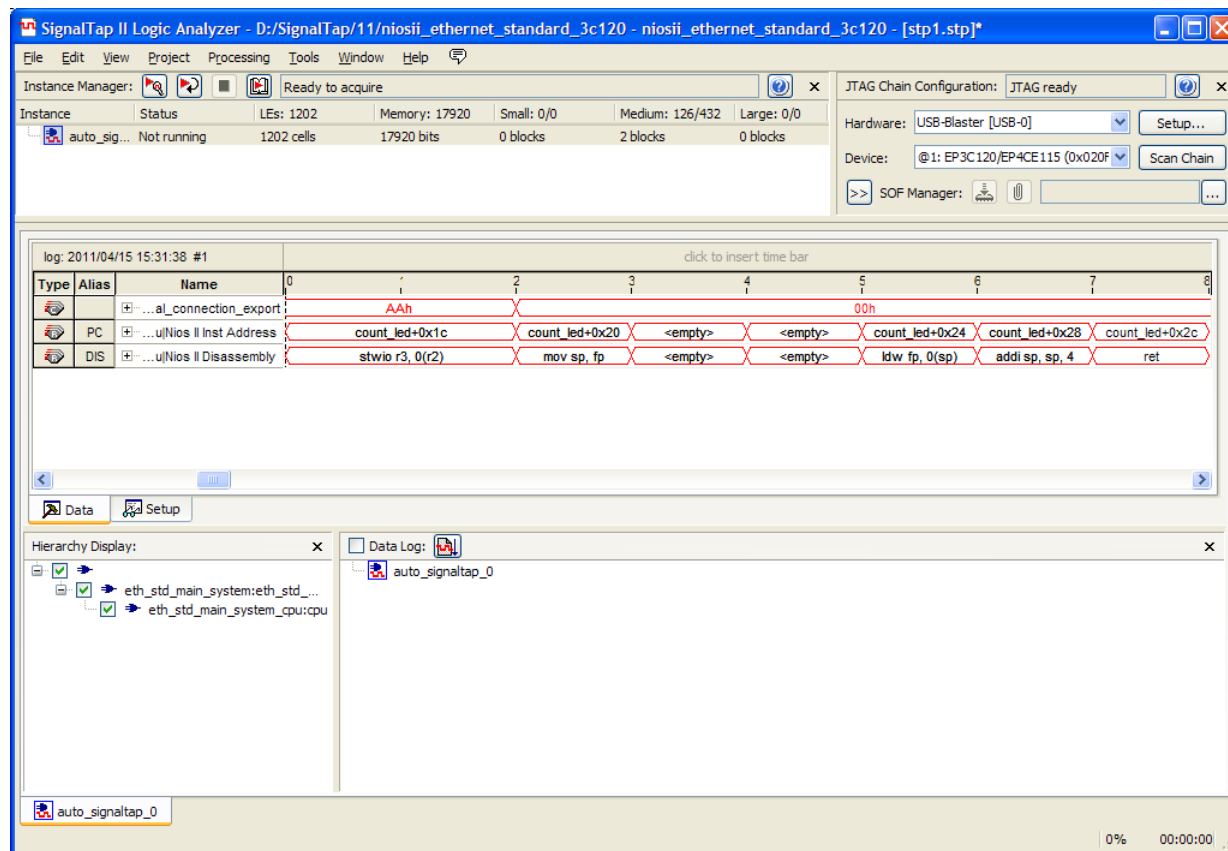
You can use the generated system to run a trace capture session with the Nios II plug-in by performing the following steps:

1. In the SignalTap II window, in the JTAG Chain Configuration pane, perform the following steps:
 - a. On the Hardware menu, select the programming cable that is connected to your Nios II development board.
 - b. In the **SOF Manager** field, click the browse button.
 - c. In the **Select Programming File** dialog box, browse to your project directory and select the **.sof**.
 - d. Click **Open**. The **Program Device** button is now available.
 - e. Click the **Program Device** button to download the **.sof** to the FPGA. 
2. In the SignalTap II window, in the Instance Manager pane, click the **Run Analysis** button to start the logic analyzer capture session. 

The analysis should stop with the **Status** in the Instance Manager pane set to **Waiting for trigger**.
3. In the Nios II SBT for Eclipse, select the project **count_binary** in the Projects list.
4. In the Nios II SBT for Eclipse, on the Run menu, click **Debug As** then click **2 Nios II Hardware**.
5. In the **Confirm Perspective Switch** dialog box, click **Yes**.
6. In the Nios II SBT for Eclipse, in the Debug pane, click the **Resume** button to start the Nios II processor execution. 

7. Check the SignalTap II window to verify that the capture session has terminated because the Nios II plug-in's trigger conditions were met. Your SignalTap II window should resemble [Figure 2](#).

Figure 2. SignalTap II Post Capture Window



Analyzing the Captured Data

You can now analyze the data captured by the Nios II plug-in and compare it to the **objdump** of the Nios II .elf. The data samples from the Nios II plug-in should correspond exactly to the assembly language program listed in the **count_binary.objdump** file.

[Figure 2](#) demonstrates the following results:

- The 0th sample captured by the Nios II plug-in matches the trigger condition you set up, capturing instruction `stwio r3, 0(r2)`.

Conclusion

As FPGA designs continue to increase in size and complexity, with increasing numbers of embedded processors, peripherals, buses, and bridges, designers need more comprehensive debugging tools to reduce system development time. The Nios II plug-in for the SignalTap II Embedded Logic Analyzer enables the capture of a program execution of a Nios II processor. Because the Nios II plug-in works together with the SignalTap II Logic Analyzer, the instruction trace from the Nios II processor is captured with other hardware events. The display of the processor instructions allows you to find system design problems efficiently.

Document Revision History

Table 1 shows the revision history for this document.

Table 1. Document Revision History

Date	Version	Changes
June 2011	2.0	This revision incorporates the following changes: <ul style="list-style-type: none"> ■ Replaced all references to Nios II Integrated Development Environment (IDE) with Nios II Software Build Tools for Eclipse. ■ Replaced all references to SOPC Builder with Qsys. ■ Updated Figure 1 and Figure 2. ■ Updated “Tool Requirements” on page 2, “Performing Data Capture with the Nios II SBT for Eclipse” on page 6, “Tutorial: Using the Nios II Plug-In” on page 10, “Hardware and Software Requirements” on page 10, and “Hardware Project Set-Up” on page 10.
June 2008	1.2	This revision incorporates the following changes: <ul style="list-style-type: none"> ■ Updated the “Tutorial: Using the Nios II Plug-In” section for the Nios II software build flow, including removal of many Nios II IDE screenshots. ■ Replaced the Count Binary design example with the signal_tap_test example.
October 2007	1.1	This revision incorporates the following changes: <ul style="list-style-type: none"> ■ Replaced all references to bit_bang_uart.c with signal_tap_test.c ■ Replaced the associated design file bit_bang_uart.c with the file signal_tap_test.c
May 2007	1.0	Initial release.