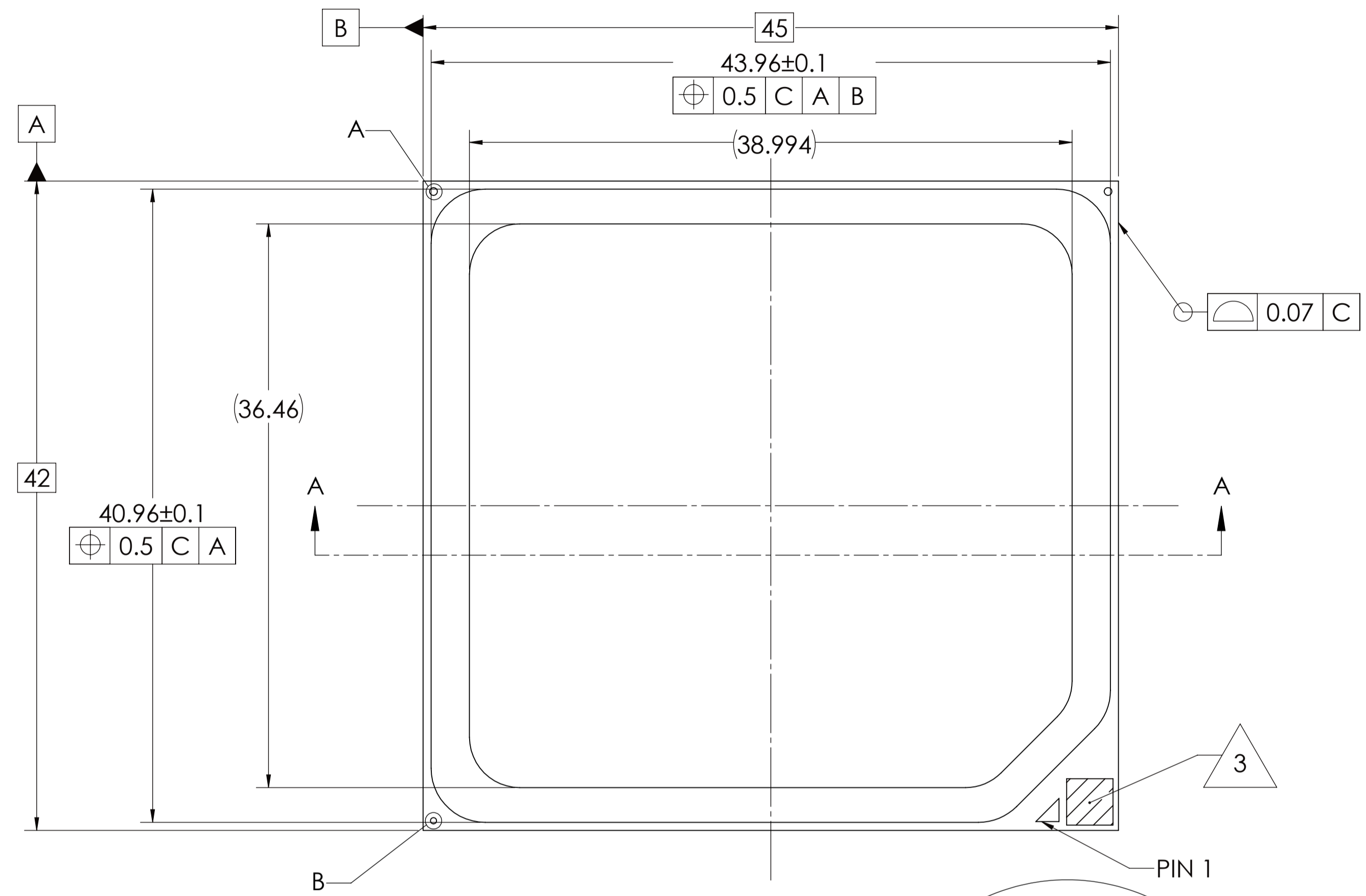
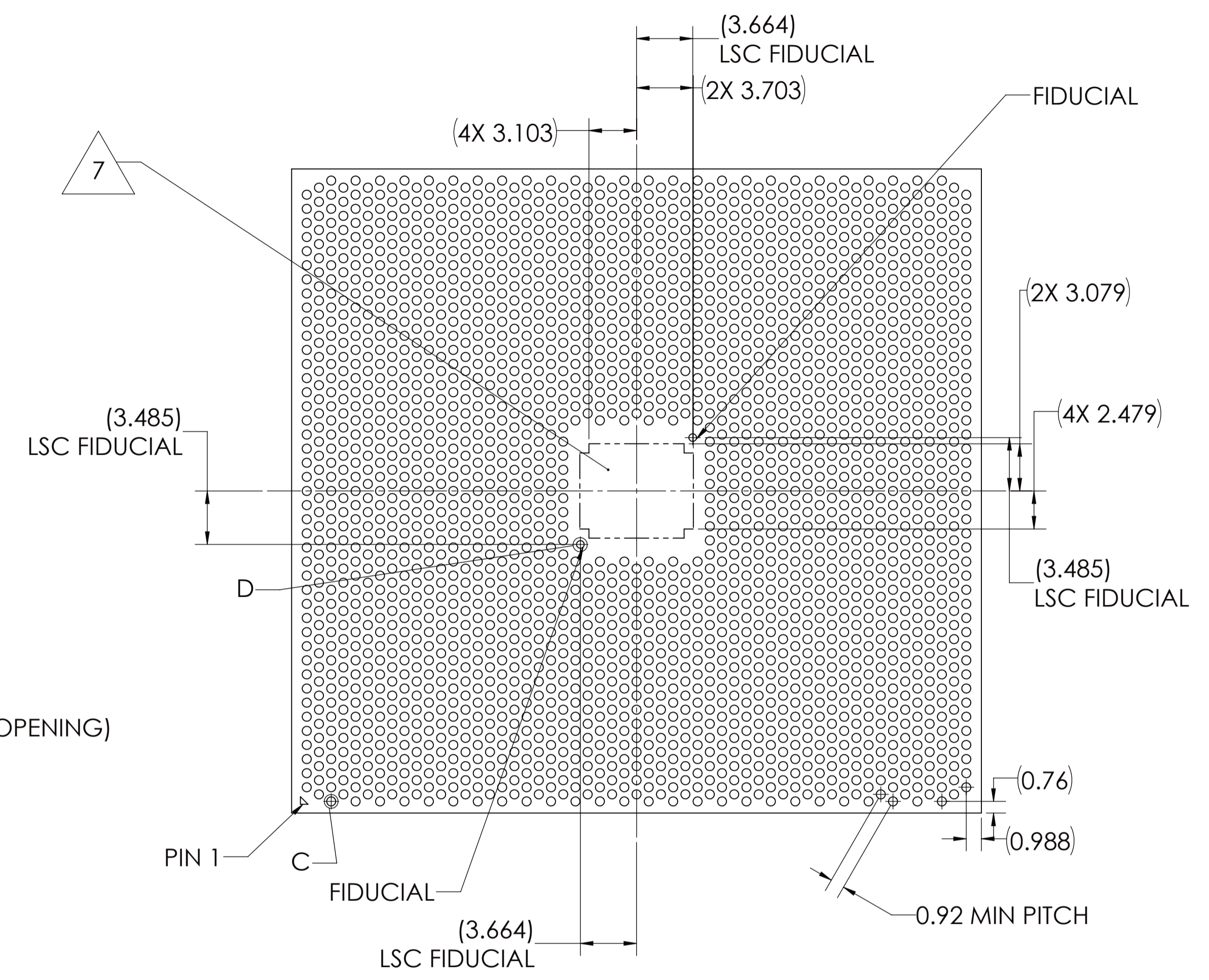
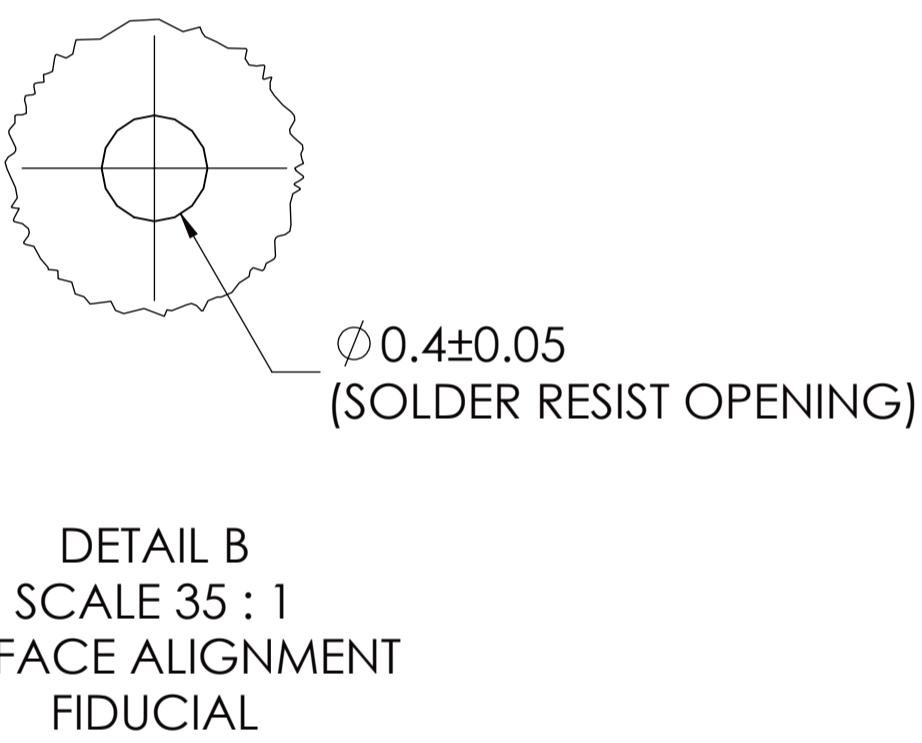
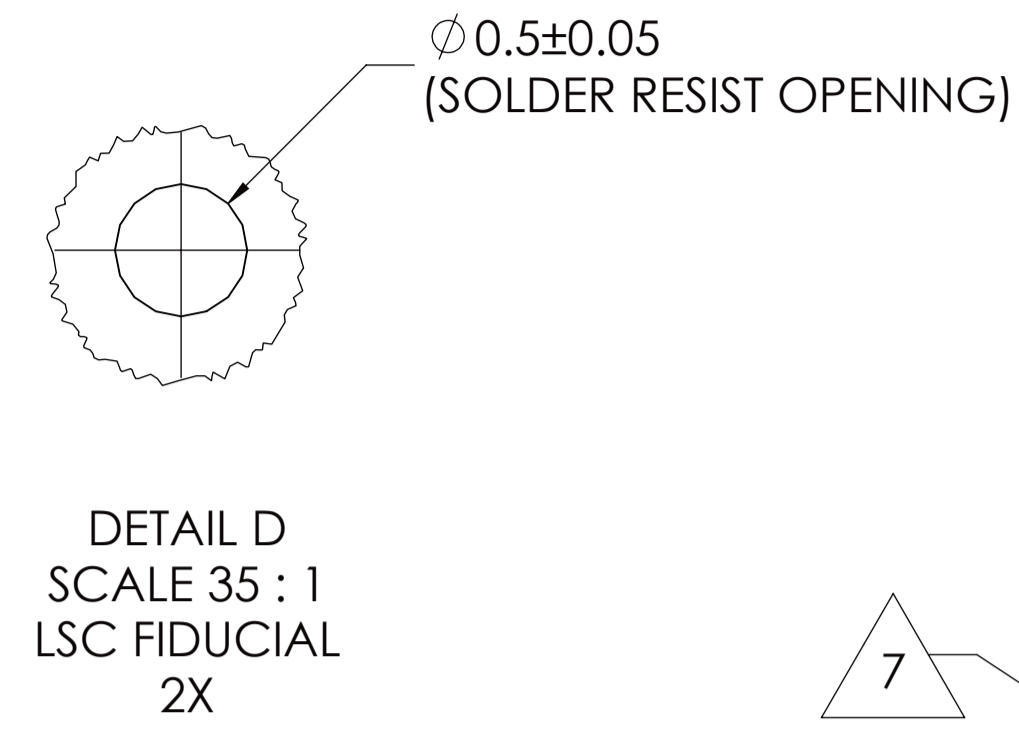


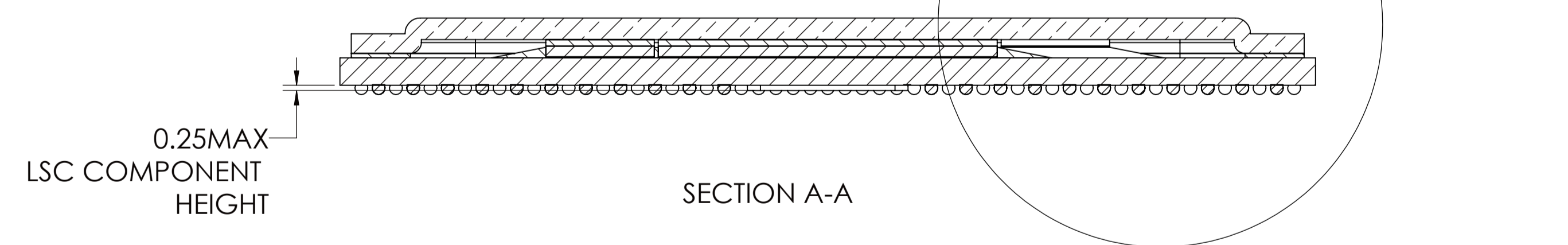
- NOTES:
1. ALL TOLERANCES ARE RSS (4 SIGMA).
 2. ALL Z STACK UP HEIGHT ESTIMATES ARE BASED ON PRE SMT BALL HEIGHT.
 3. MARK KEEP IN ZONE, NO COMPONENTS ALLOWED.
 4. NOMINAL PACKAGE MASS ESTIMATE = 24.4 GRAMS. ACTUAL WEIGHT MAY VARY DUE TO MANUFACTURING PROCESS.
 5. ALL Z-HEIGHT RELATED DIMENSIONS ARE BASED ON LIMITED SAMPLING DATA.
 6. TOP SURFACE OF EPOXY IS UNDER THE TOP SURFACE OF THE DIE
 7. LSC KEEP IN ZONE.
 8. INCOMNG BALL SIZE 22mils



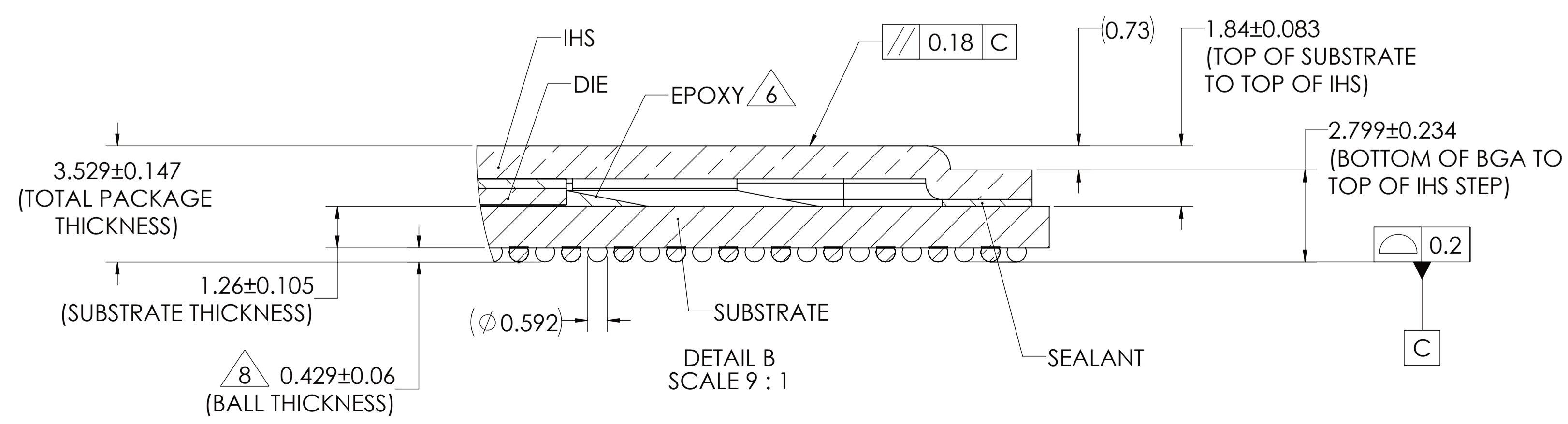
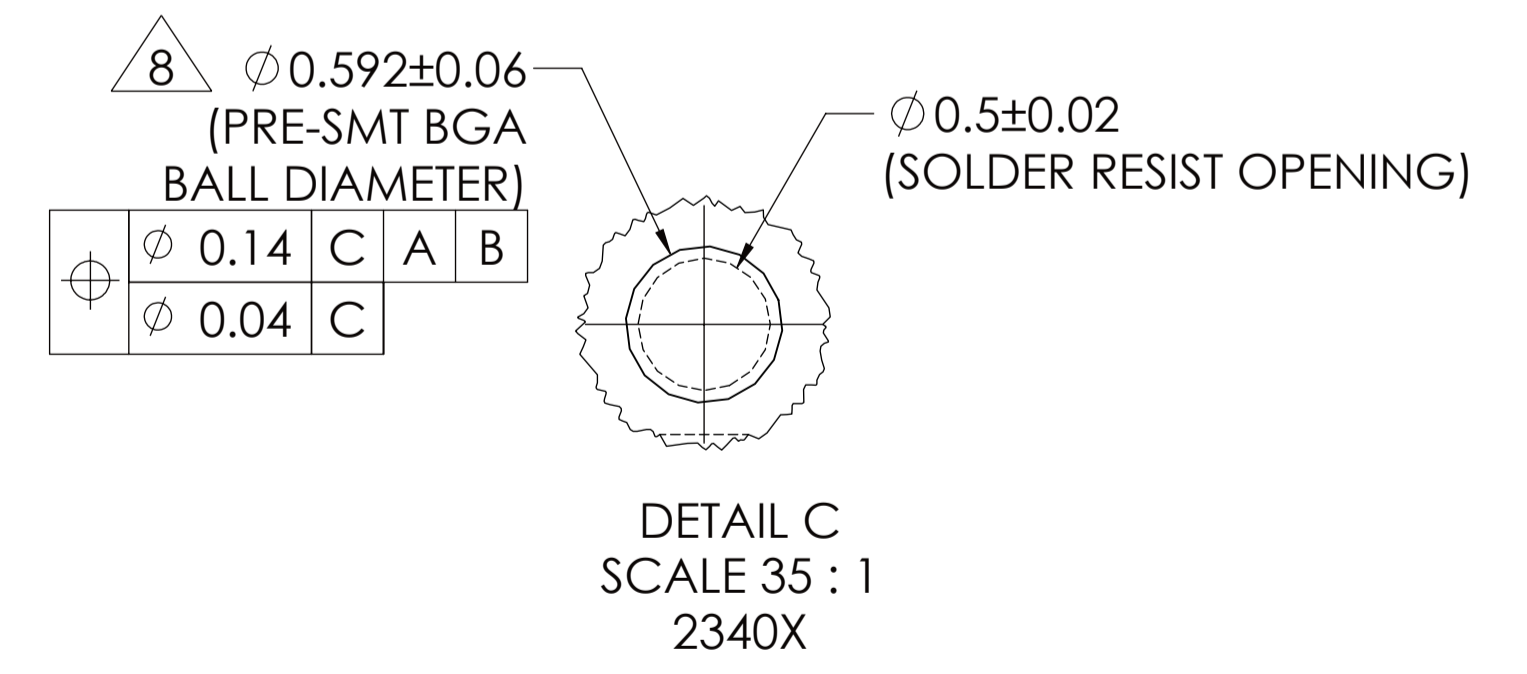
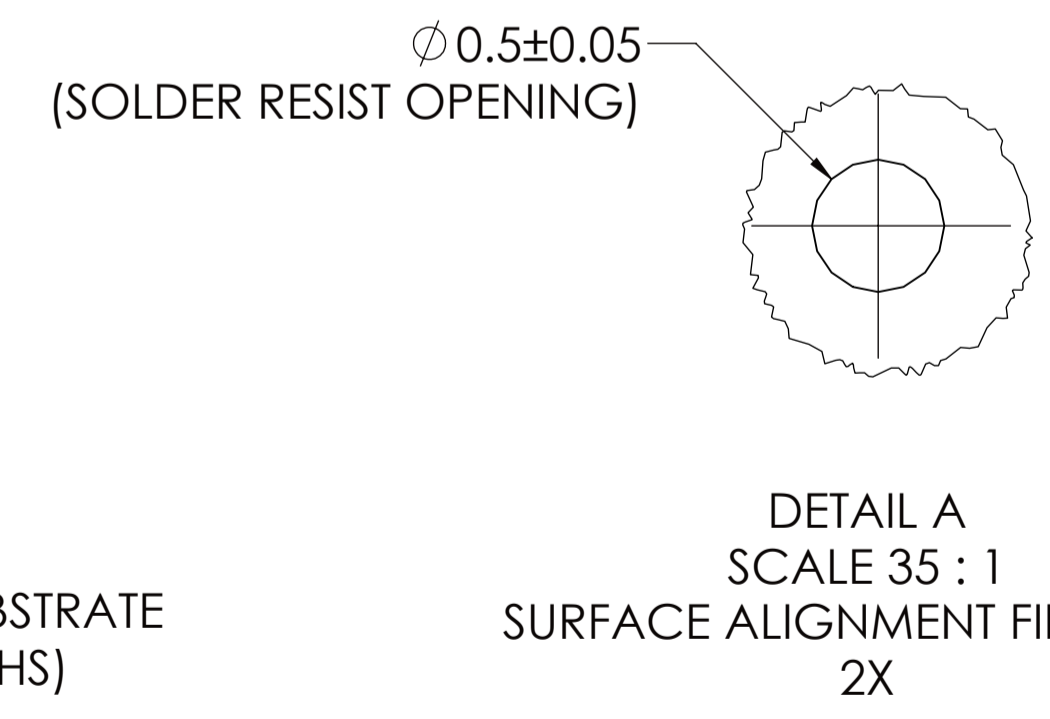
TOP VIEW



BOTTOM VIEW



SECTION A-A



DETAIL B SCALE 9 : 1

UNLESS OTHERWISE SPECIFIED: DIMENSIONS ARE IN MILLIMETERS. INTERPRET DIMENSIONS AND TOLERANCES PER ASME Y14.5-2009.	DESIGNED BY	DATE	DEPARTMENT	 2200 MISSION COLLEGE BLVD. P.O. BOX 58119 SANTA CLARA, CA 95052-8119
	DRAWN BY	DATE	TITLE	
	CHECKED BY	DATE	PACKAGE MECHANICAL DRAWING	
	APPROVED BY	DATE	45mm X 42mm, 2340 BGA	
MATERIAL:	THIRD ANGLE PROJECTION			SIZE
FINISH: SEE NOTES				DRAWING NUMBER
				A1
				M74495
				REV
				02
				SCALE: 4:1
				DO NOT SCALE DRAWING
				SHEET 1 OF 2

ZONE	REV	DESCRIPTION	DATE	APPR.
-	1	PRELIMINARY RELEASE	2/09/2022	AK
SH1 B6, SH1 H8	2	UPDATED COPLANARITY AND FLATNESS VALUES, AND REMOVED PRELIMINARY NOTE	10/3/2023	LJ