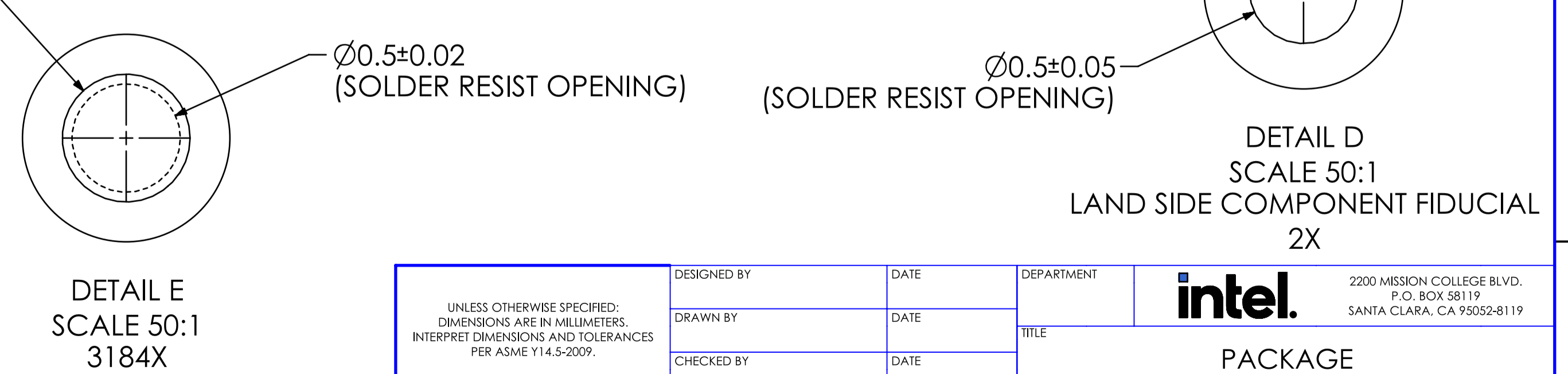
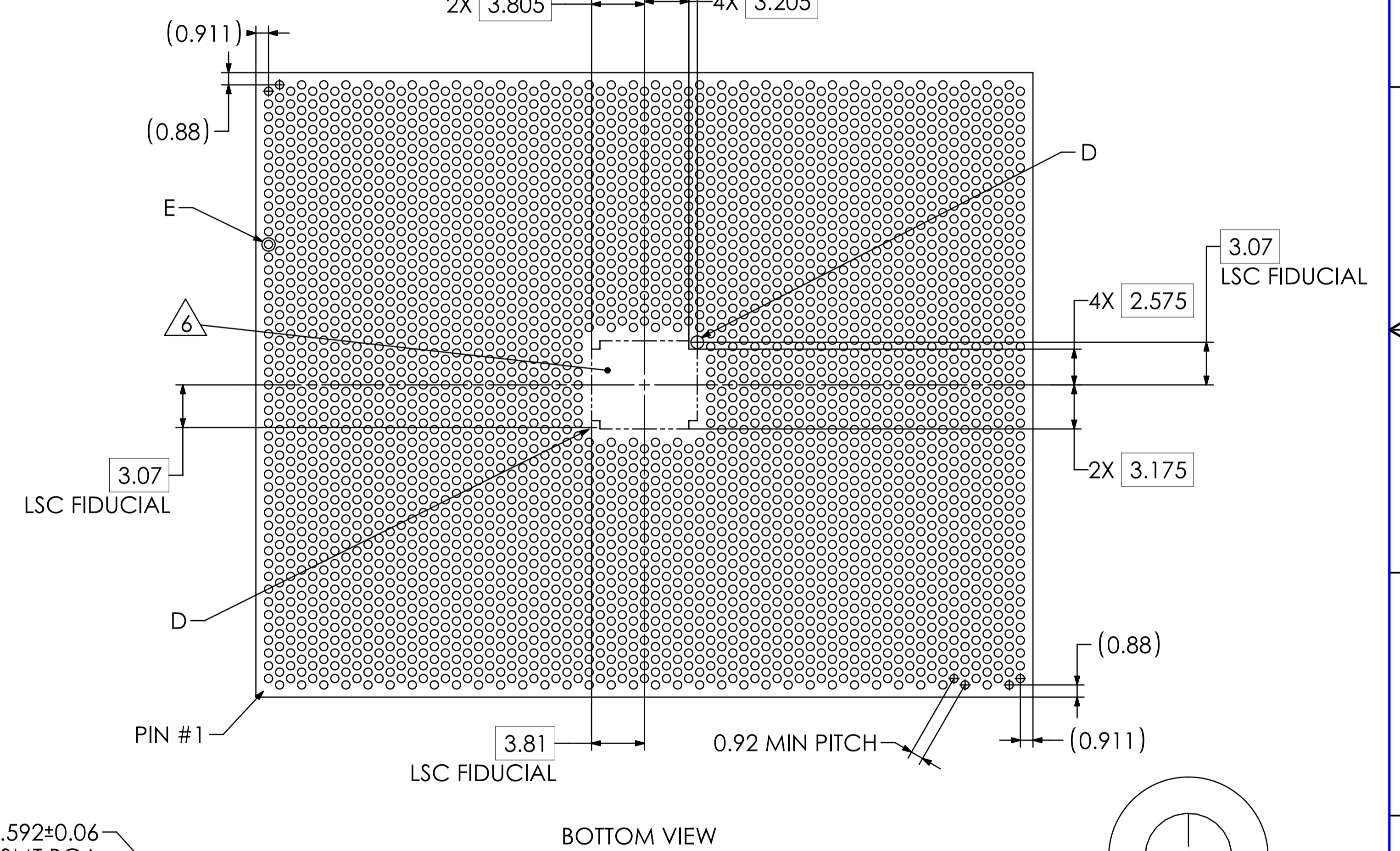
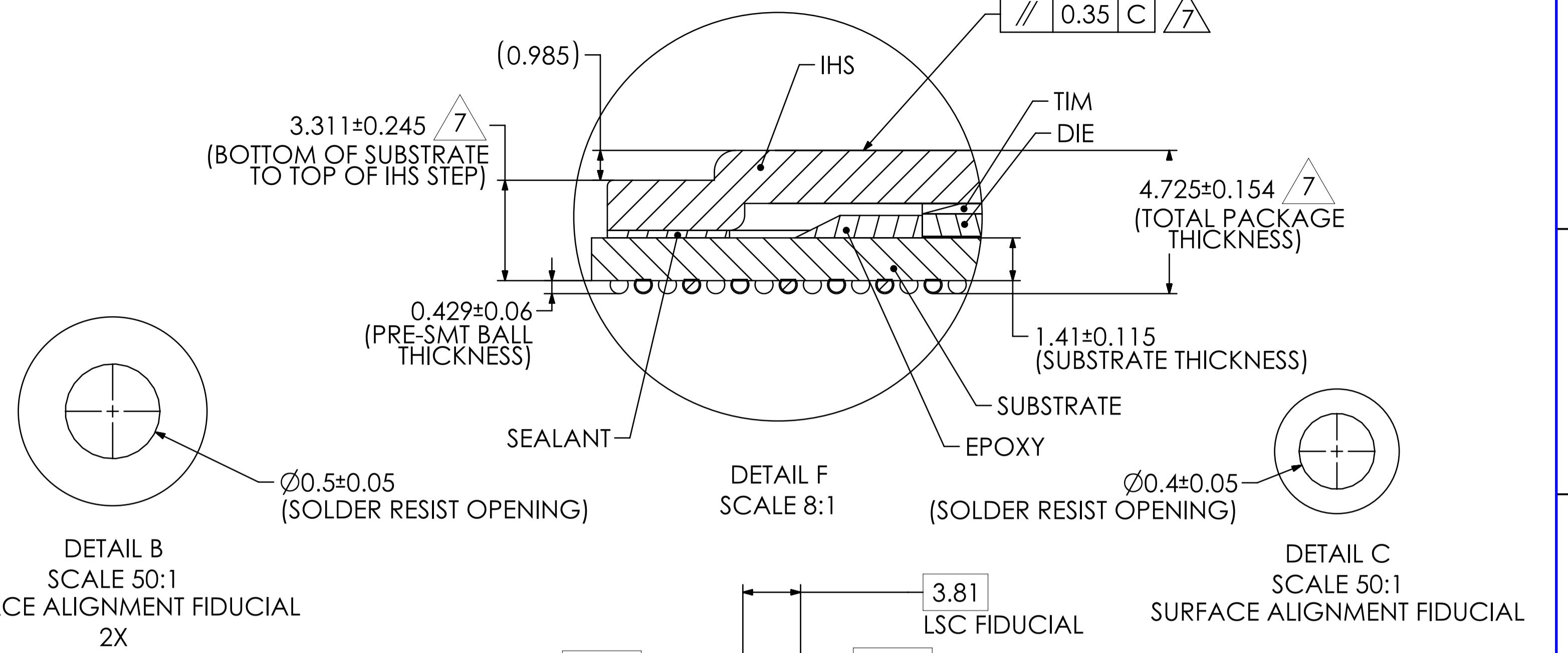
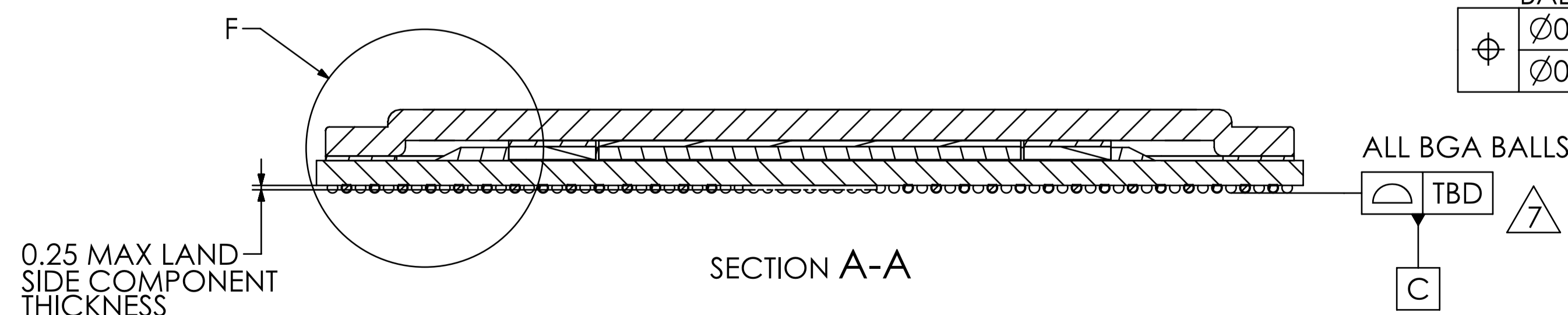
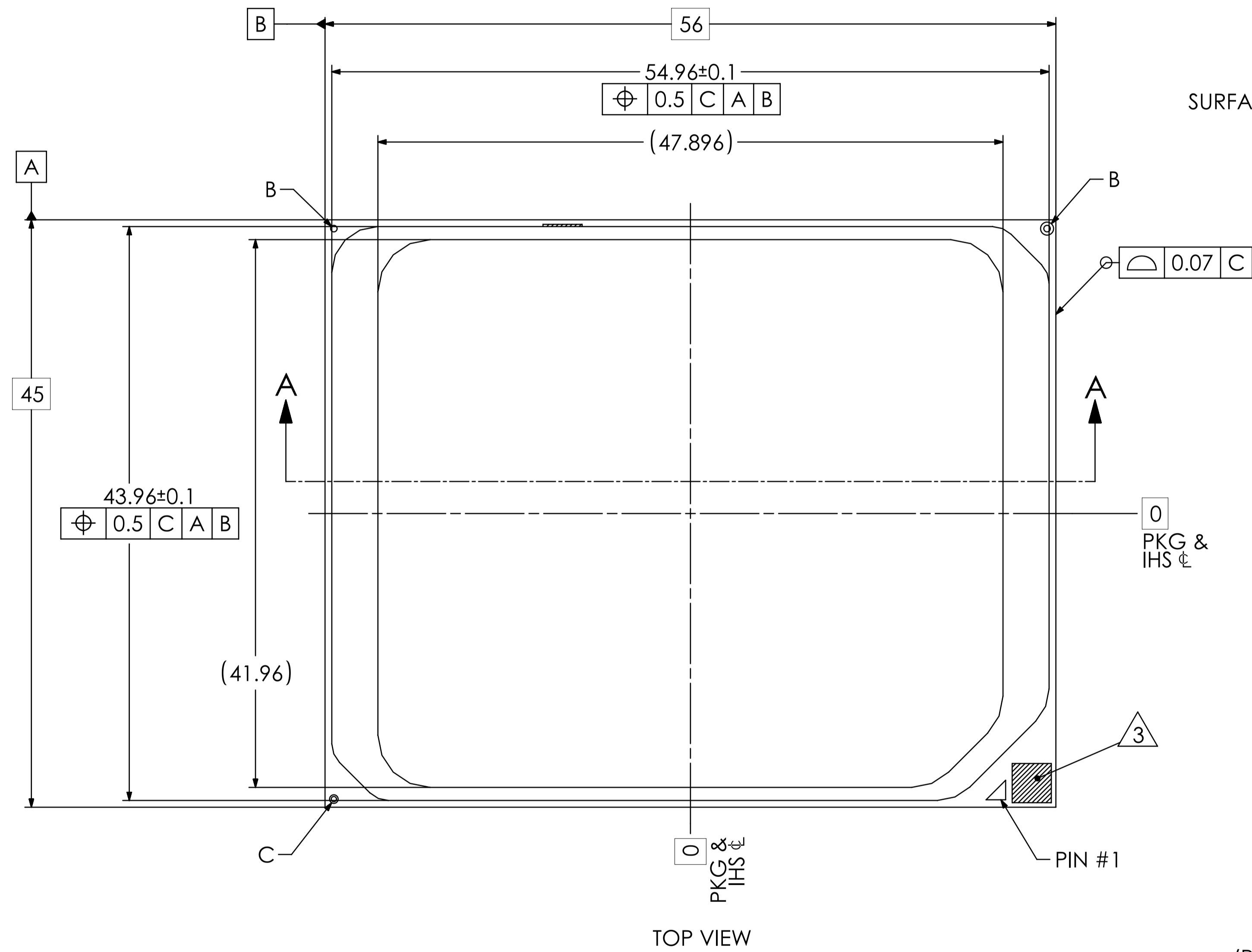


NOTES:

- 1. ALL TOLERANCES ARE RSS (4 SIGMA).
- 2. ALL Z-STACK UP HEIGHT ESTIMATES ARE BASED ON PRE-SMT BALL HEIGHT.
- 3. MARK KEEP IN ZONE. NO COMPONENTS ALLOWED.
- 4. NOMINAL PACKAGE MASS ESTIMATE - 50.76 GRAMS. ACTUAL MASS MAY VARY DUE TO MANUFACTURING PROCESS.
- 5. ALL Z-HEIGHT RELATED DIMENSIONS ARE BASED ON LIMITED SAMPLING DATA.
- 6. LAND SIDE COMPONENT KEEP IN ZONE.
- 7. PRELIMINARY VALUE.



UNLESS OTHERWISE SPECIFIED: DIMENSIONS ARE IN MILLIMETERS. INTERPRET DIMENSIONS AND TOLERANCES PER ASME Y14.5-2009.	DESIGNED BY	DATE	DEPARTMENT	<b>intel.</b> 2200 MISSION COLLEGE BLVD. P.O. BOX 58119 SANTA CLARA, CA 95052-8119
	DRAWN BY	DATE	TITLE	
	CHECKED BY	DATE	PACKAGE MECHANICAL DRAWING 56mm X 45mm, 3184 BALLS	
	APPROVED BY	DATE	SCALE 4:1 DO NOT SCALE DRAWING SHEET 1 OF 2	
MATERIAL:	THIRD ANGLE PROJECTION	SIDE A1 DRAWING NUMBER N39401 REV 02		
FINISH:				
SEE NOTES				

8

7

6

5

4

3

2

1

DWG NO. N39401 SH. 2 REV. 02

H

H

G

G

F

F

E

E

D

D

C

C

B

B

A

A

ZONE	REV	DESCRIPTION	DATE	APPR.
-	1	ENGINEERING RELEASE	11/27/2023	JG
SH1 H1	2	STACKUP UPDATE	3/25/2024	LJ

8

7

6

5

4

3

2

1