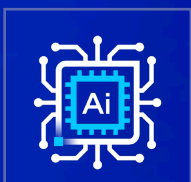


Powering the Future

Unleash the Transformative Benefits of Intel® Arc™ GPU at the Edge.



Intel® Arc™ GPU Revolutionize the Edge

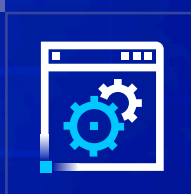


Drive AI and other GPU workloads

Purpose-built acceleration: XMX AI Engine for faster AI inference, Xe Media Engine to accelerate media-processing.

Engineered for the edge

Carve through the edge's complexities with long-life GPU card offerings from Intel's ODM ecosystem, with a range of form factors, power levels, and performance levels.



Eliminate vendor lock-in

With a more open, standards-based software stack. Code once and run across GPUs, CPUs and other hardware accelerators with the open-sourced OpenVINO™ toolkit.

Intel® Arc™ GPU for the Edge



intel ARC™

7xxE

High performance for heavy AI workloads and complex tasks

intel ARC™

5xxE

Immersive visuals with enhanced AI inferencing capabilities

intel ARC™

3xxE

Fits low power and small form factor requirements

AI Meets Reality: Edge GPUs Deliver Fast AI Inference Where It's Needed



Video walls and control-room monitors

Create standout viewer experiences across a broad range of media formats.

Retail, Manufacturing, Smart Communities, Safety & Security

Machine vision and video analytics

Apply AI models to drive business, improve safety and increase efficiency.

Retail, Safety & Security, Smart Communities, Manufacturing, Smart Factories



Interactive displays and kiosks

Define new levels of customer engagement with intelligent, interactive public displays.

Retail, Commercial Gaming, Smart Communities

Learn more about Intel® Arc™ GPUs at www.intel.com/arc-for-edge

intel.

Notices and disclaimers

Intel® technologies may require enabled hardware, software, or service activation

Not all features are available on all SKUs.

Not all features are supported in every operating system.

No product or component can be absolutely secure.

Your costs and results may vary.

All product plans and roadmaps are subject to change without notice

Intel may change availability of products and support at any time without notice.

Code names are used by Intel to identify products, technologies, or services that are in development and not publicly available. These are not "commercial" names and are not intended to function as trademarks.

Intel is committed to respecting human rights and avoiding complicity in human rights abuses. See Intel's Global Human Rights Principles. Intel® products and software are intended only to be used in applications that do not cause or contribute to a violation of an internationally recognized human right.

Warning for Voltage Offset: Applying an overvoltage can damage your GPU and lead to the reduction in the lifespan of your GPU or reduction in overall system stability

© Intel Corporation. Intel, the Intel logo, and other Intel marks are trademarks of Intel Corporation or its subsidiaries. Other names and brands may be claimed as the property of others.