

August 2024

# Transformational AI: The Next Generation of Computing

Leading Innovation in the AI PC Era  
with Intel's AI Ecosystem Partners



intel®



# The Era of the AI PC is Here

Intel is transforming the PC user experience with the next-generation of AI PCs.

## What is an AI PC?

A PC with an integrated NPU silicon splits tasks between hardware components to enable a wave of new experiences in productivity, creativity, and security through the combined power of the CPU, GPU, and NPU.

Not just a trend... AI PCs are expected to comprise

**80%** of PC market by 2028\*

## GPU

### High throughput

The graphics processing unit is ideal for large workloads that require parallel throughput.

## CPU

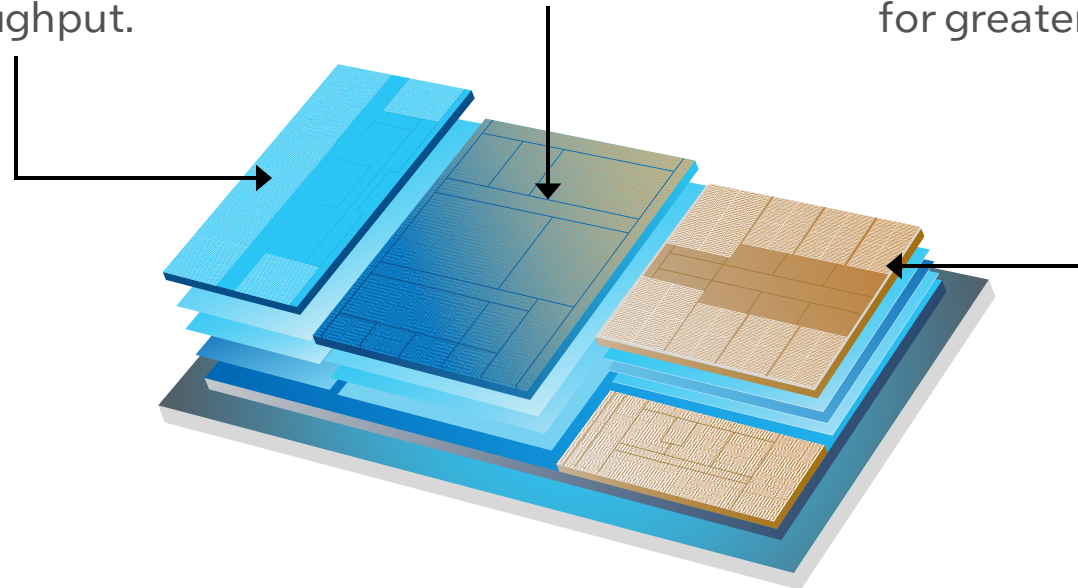
### Fast response

You can rely on the central processor for smaller workloads at low latency.

## NPU

### Power efficiency

The neural processing unit handles sustained, heavily-used AI workloads at low power for greater efficiency.



# Redefining AI Computing with Intel® Core™ Ultra

The Intel Core Ultra Series is at the heart of the AI PC, delivering unmatched performance, enhanced security, and an open ecosystem ready for AI to revolutionize computing experiences.



AI model  
optimization  
and support



New AI  
experiences



Immersive  
graphics



Optimal  
battery life,  
optimal  
performance



Trusted  
expertise  
in AI pc  
innovation



Enhanced  
speed and  
efficiency



Next-Gen Power Savings  
Up to

**25%**

Reduction in Processor  
Power Consumption<sup>1</sup>

New, Build-In Arc Graphics  
Up to

**2x**

3D Graphics  
Performance<sup>2</sup>

New, Integrated AI Engine  
Up to

**70%**

Faster Generative AI  
Performance<sup>3</sup>

Newly Optimized For  
Up to

**500+**

AI Models

See [intel.com/performanceindex](https://www.intel.com/performanceindex) for details. Results may vary. 1. Consume up to 25% less power while playing a 4K video from a local drive with an Intel® Core™ Ultra 7165H processor, compared to a 13th Gen Intel® Core™ i7-1370P processor. As measured by system on chip (SOC) package power consumption while running a 4K LVPB workflow. 2. As measured by 3D Mark Time Spy graphics score on the Intel® Core™ Ultra 7 processor 155H vs. the 13th Gen Intel® Core™ i7-1360P processor. 3. Details at [www.intel.com/PerformanceIndex](https://www.intel.com/PerformanceIndex).



# Choose Your Navigation Path

Explore three ways to view AI PC Partner Applications in this Look Book

See consumer solutions



See commercial solutions



See solutions by use case



Solution Lookbook pages are designed so users can quickly return to navigation slides. You are more likely to find similar solutions by exploring specific use cases.

If at any point you want to return to this slide—you can click the (⏪) icon in the top-right corner of most slides.

# Explore AI PC Partner Applications for Consumer Markets

[Back to AI PC Navigation Path](#)



Adobe Photoshop Lightroom Classic



Adobe Premiere Pro



Blackmagic Design DaVinci Resolve



GIMP GNU Image Manipulation



VEGAS Pro 22



WriteUp Application on Solar LLM



Wondershare Filmora



XSplitt VCam



Zoom

# Explore AI PC Partner Applications for Commercial Markets

[Back to AI PC  
Navigation Path](#)



AI Studios | DeepBrain AI



BUFFERZONE



CrowdStrike



Dhee.AI



VEGAS Pro 22



ZenoChat



Zoom

# Explore AI PC Partner Applications by Use Cases

[Back to AI PC  
Navigation Path](#)



Creativity and Content Creation



Workplace Productivity



Collaboration



Security and Manageability

# Creativity and Content Creation

[See all Use Cases](#)

[Back to AI PC  
Navigation Path](#)



Click the solutions to learn more about them

## AI PC for Creativity

- [Adobe Photoshop Lightroom Classic](#)
- [Adobe Premiere Pro](#)
- [Blackmagic Design DaVinci Resolve](#)
- [GIMP GNU Image Manipulation](#)
- [VEGAS Pro 22](#)
- [Wondershare Filmora](#)
- [WriteUp Application on Solar LLM](#)
- [XSplit VCam](#)





# Workplace Productivity

[See all Use Cases](#)

[Back to AI PC  
Navigation Path](#)



Click the solutions to learn more about them

## AI PC for Productivity

- [XSplit VCam](#)
- [ZenoChat](#)
- [Zoom](#)



# Collaboration

[See all Use Cases](#)

[Back to AI PC  
Navigation Path](#)



Click the solutions to learn more about them

## AI PC for Collaboration

- [AI Studios | DeepBrain AI](#)
- [Blackmagic Design DaVinci Resolve](#)
- [XSplit VCam](#)
- [Zoom](#)



# Security and Manageability

[See all Use Cases](#)

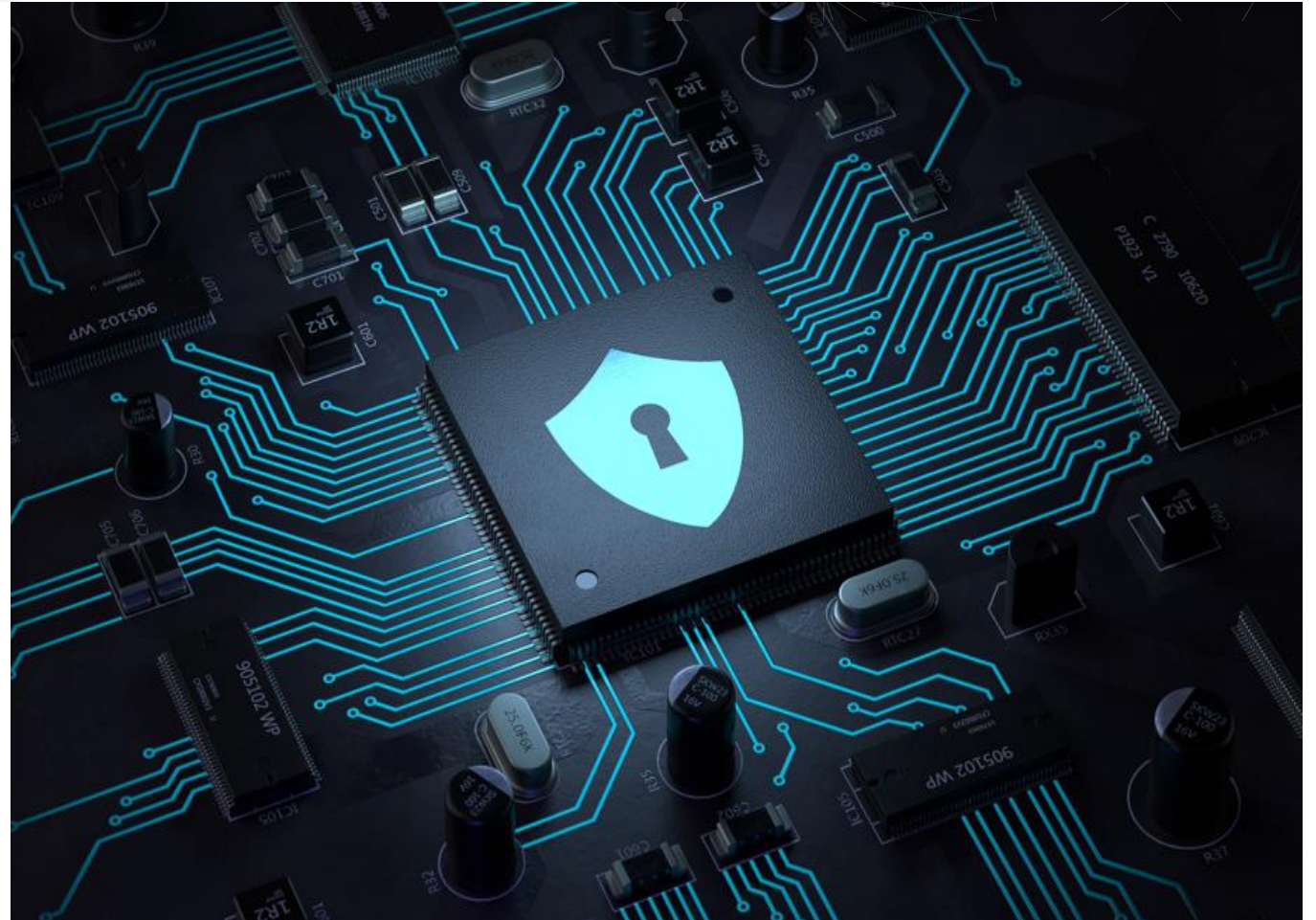
[Back to AI PC  
Navigation Path](#)



Click the solutions to learn more about them

## AI PC for Security

- [CrowdStrike](#)
- [Dhee.AI](#)
- [BUFFERZONE](#)







Back to AI PC  
Partner Applications



# Adobe Photoshop Lightroom Classic

Fine-tune photos and utilize AI for precise and efficient editing

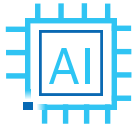
From hobbyists to professionals, photo editing remains one of the most tedious and time intensive tasks in photography. With Adobe Photoshop Lightroom Classic, photographers can edit their photos with a selection of powerful AI features to save time and better capture their vision. The tools and features in Lightroom Classic give users everything they need to create, edit, organize, and share their photos. Users of Lightroom Classic get powerful tools to make the most out of their RAW image formats. Make colors pop with HDR editing, enhance image resolutions, denoise images, automatically select the sky or subjects, and more. Optimized using Intel® Core™ Ultra processors, AI features in Lightroom Classic work fast to provide precise and efficient editing.

*Get up to  
52% faster AI  
photo editing  
performance  
with Intel Core  
Ultra processors.<sup>1</sup>*

## Key Intel-Enabled Features



AI Assisted Masking



AI-powered Pixel  
Correction



AI Assisted Denoise



AI Lens Blur

## The Intel Difference

Developed and optimized with Intel Core Ultra processors to provide users:

- Faster AI photo editing performance
- Enhanced photo editing on a thin and light device
- Increased processing speed and graphics performance

### Ordering Guidance:

- [Adobe Photoshop Lightroom Classic Product Page](#)

Country/Geo: Global

### Learn more:

- [Adobe Website](#)
- [Explore Adobe Photoshop Lightroom Adobe Website](#)

### Intel Products and Technologies

- [Intel Core Ultra Processors Product Page](#)
- [The AI PC Powered by Intel Page](#)



Adobe

accelerated by intel.

<sup>1</sup>As measured by an AI photo editing workload using Adobe Lightroom Classic on an Intel® Core™ Ultra 7 processor i65H vs. a 13th Gen Intel® Core™ i7-1370P processor. See intel.com/performanceindex for details. Results may vary.





# Adobe Premiere Pro

## Boosting Video Editing Workflows With AI

Back to AI PC  
Partner Applications



*Get up to  
**132 % faster**  
AI video editing  
performance with  
Intel Core Ultra  
processors.<sup>1</sup>*

Adobe Premiere Pro is an award-winning software for creating and editing video. The tools and features in Premiere Pro enable users to add transitions and effects, adjust color, mix audio, and more to bring their stories to life. This includes a host of time-saving features powered by AI that have been optimized for Intel® Core™ Ultra processors to accelerate video editing workflows. With just a click, users can enhance the look of their video with automatic color corrections. Experience and novice sound editors can leverage Enhance Speech to clean up poorly recorded audio and make it sound better. Hours of editing time from an existing video can be saved with Scene Edit Detection since it identifies and creates edit points to streamline the editing process. These features are just a few ways Adobe and Intel collaborate to enable anyone to be creative in their storytelling.

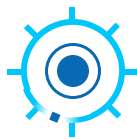
### Key Intel-Enabled Features



Scene Edit Detection



Enhance Speech



Auto Color

### The Intel Difference

Developed and optimized with Intel Core Ultra processors to provide users:

- Faster AI video editing performance
- Increased performance in editing with popular media formats like HEVC 4:2:2
- Powerful AI features with Integrated Intel Graphics

#### Ordering Guidance:

- [Adobe Creative Cloud Plans, Pricing, and Membership Webpage](#)

Country/Geo: Global

#### Learn more:

- [Adobe Website](#)
- [Explore Adobe Premiere Pro](#)

#### Intel Products and Technologies

- [Intel Core Ultra Processors Product Page](#)
- [The AI PC Powered by Intel Page](#)



<sup>1</sup>As measured by an AI video editing workload using Adobe Premiere Pro Beta on an Intel® Core™ Ultra 7 processor 165H vs. a 13th Gen Intel® Core™ i7-1370P processor. See intel.com/performanceindex for details. Results may vary.

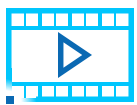


# AI Studios

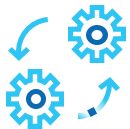
Accelerate Video Creation with AI-powered Text-to-Video

AI Studios by DeepBrain AI transforms video creation to make engagements more human and impactful. Powered by Intel® Core™ Ultra processors, AI Studios features over eighty hyper-realistic digital AI avatars and custom digital humans with more than one hundred lifelike voices in over eighty languages. The app offers easy video editing and convenient access to conversational AI for scriptwriting and video production, all while ensuring copyright compliance. AI Studios leverages Intel Core Ultra processors local hardware capabilities to reduce reliance on cloud resources and intelligently balance some workloads, like text to –voice processing, between the processors GPU and NPU. This not only minimizes potential Internet bottlenecks, but also ensures efficient resource use, streamlined performance, and reduced operational expenses. AI Studios enables users to create, scale, and distribute AI-generated videos efficiently, offering a competitive edge with reduced production time and costs. Whether for conversational interfaces, customer service, or content creation, AI Studios empowers businesses to deliver impactful and engaging digital solutions across various industries.

## Key Intel-Enabled Features



Optimized Video Rendering



Local Processing



Workload Management



Fast Text-to-Voice Conversion

### Intel Products and Technologies

- [Intel Core Ultra Processors Website](#)
- [The AI PC Powered by Intel Page](#)

Back to AI PC  
Partner Applications



*The AI host takes the place of a hypothetical 40 thousand dollar a year position in exchange for a 20-dollar-a-month subscription to a program that creates the episode. However, this doesn't mean that on-air talent won't be used in other roles in the communications department."*

City Representative,  
Communications Division

## The Intel Difference

Developed and optimized with Intel Core Ultra processors to provide users:

- Efficient text-to-voice processing
- Reduced cloud resource dependency and costs
- Minimized Internet bottlenecks for smooth video creation

### Ordering Guidance:

- [Get started with DeepBrain AI](#)

Country/Geo: Global

### Learn more:

- [DeepBrain AI Website](#)
- [Privacy Policy](#)

accelerated by **intel.**



*The ability to run deep learning directly on Intel PCs with an onboard NPU is a game changer for our safe browsing solution. It will help reduce cost and privacy concerns of Cloud AI while helping customers better protect against account phishing scams that have become the #1 entry point for all attacks"*

Dr. Ran Dubin, CTO  
BUFFERZONE

#### Ordering Guidance:

- [BUFFERZONE Contact Us Page](#)

Country/Geo: North America, EMEA

#### Learn more:

- [BUFFERZONE Website](#)
- [BUFFERZONE How It Works Page](#)
- [BUFFERZONE NoCloud Anti-Phishing Solution Powered by Intel Core Ultra Video](#)
- [BUFFERZONE and Intel Anti-Phishing Press Release](#)

accelerated by **intel.**

# BUFFERZONE

## Enhancing Security with AI-Based Phishing Detection

In a today's cybersecurity landscape where phishing attacks are becoming increasingly sophisticated, BUFFERZONE® offers a solution to counter these attacks and protect sensitive data with NoCloud™ Anti-Phishing. Powered by Intel® Core™ Ultra processors and supported by Intel® vPro™ technology, NoCloud fortifies defenses by offloading complex AI tasks to the processor's neural processing unit (NPU). This enables local AI processing which helps safeguard data privacy without cloud dependency, simultaneously reducing cloud costs. Optimized by the OpenVINO™ toolkit, the solution uses advanced object detection to monitor visited URLs in real-time, alerting users to potential phishing threats and unauthorized use of company brands. By leveraging the Intel processor NPU and optimizing models with OpenVINO, BUFFERZONE enables compute efficient, on-premise data processing that frees up CPU power. This not only improves secure handling of sensitive information and user privacy, but also enables a smoother computing experience. Integrating Intel's Core Ultra processor technology represents a significant advancement in BUFFERZONE's cybersecurity solution, delivering robust anti-phishing protection against evolving threats.

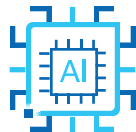
### Key Intel-Enabled Features



Secure Virtual  
Container



Endpoint Data  
Processing



AI Anti-Phishing



Real-Time  
Threat Detection

### The Intel Difference

Developed and optimized with Intel Core Ultra processors with NPUs and GPUs, OpenVINO, and Intel vPro to help provide users:

- Significant reductions in anti-phishing operational costs
- Improved inference performance compared to CPU only inference
- Enhanced detection latency compared to cloud-based solutions

#### Intel Products and Technologies

- [Intel Core Ultra Processors Website](#)
- [Intel OpenVINO Toolkit Website](#)
- [Intel vPro Platform Website](#)





*We are excited to optimize DaVinci Resolve for the latest Intel® Core® Ultra processor with advanced media engine and AI technologies. With our strong partnership and Intel's unwavering support for the creator community, we are looking forward to be able to fully optimize our software for the latest Intel Core Ultra processor and enhance the user experience for our customers."*

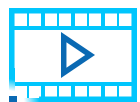
Rohit Gupta, Director  
DaVinci Software Engineering,  
Blackmagic Design

# Blackmagic Design DaVinci Resolve

## Streamlining Multimedia Production with Integrated Editing Tools

In the fast-paced world of multimedia production, balancing various software tools for different tasks can be time-consuming and complex. DaVinci Resolve simplifies this by combining editing, color correction, visual effects, motion graphics, and audio post-production into one seamless solution. Its user-friendly interface makes it easy for beginners to learn, while its powerful features meet the demands of professionals. By replicating the capabilities of a full post-production studio, this all-in-one solution allows users to manipulate high-resolution videos and images from start to finish, therefore preserving time and resources. Enhanced by Intel® Core™ Ultra processors, Intel® Arc™ graphics, and the OpenVINO™ toolkit, the solution leverages CPU and GPU optimization for smoother collaboration through its multiuser feature and live project repositories, while its specialized editing keyboards support workflow efficiency. DaVinci Resolve also provides reliable compatibility with 3rd party plugins and storage systems, streamlining the production process even further.

## Key Intel-Enabled Features



All-in-one Solution  
for Post-Production



AI-powered Editing  
Features



Multiuser  
Collaboration



Compatible with  
Wide Range of  
Blackmagic Hardware

### Intel Products and Technologies

- [Intel Core Ultra Processors Website](#)
- [Intel Arc Graphics Website](#)
- [OpenVINO Toolkit Website](#)
- [The AI PC Powered by Intel Page](#)

## The Intel Difference

Developed and optimized with Intel Core Ultra processors, Intel Arc graphics, and the OpenVINO toolkit to provide users:

- Up to 67% faster AI video editing performance<sup>1</sup>
- Reduced operational cost through power savings

### Ordering Guidance:

- [DaVinci Resolve Website](#)

Country/Geo: Global

### Learn more:

- [Blackmagic Design Website](#)
- [DaVinci Resolve Product Page](#)
- [Blackmagic Design Solution Brief](#)

accelerated by **intel.**

<sup>1</sup>As measured by an AI video editing workflow with DaVinci Resolve Studio on an Intel® Core™ Ultra 7 processor 165H vs. a 13th Gen Intel® Core™ i7-1370P processor. See [intel.com/performanceindex](https://www.intel.com/performanceindex) for details. Results may vary.





Back to AI PC  
Partner Applications



*CrowdStrike's collaboration with Intel is a valuable part of our mission: to elevate cybersecurity effectiveness, secure the future, and stop breaches everywhere through the power of AI."*

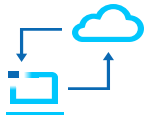
Joel Spurlock,  
Vice President of Data Science  
CrowdStrike

As traditional malware evolves into more sophisticated, fileless attacks, organizations require more advanced defenses. CrowdStrike delivers a comprehensive cloud-native cybersecurity platform, protecting critical areas of enterprise risk – endpoints and cloud workloads, identity and data. Leveraging Intel® Core™ Ultra processors with Intel® vPro™, the CrowdStrike Falcon platform employs AI and machine learning to detect and thwart cybersecurity threats in near real-time. CrowdStrike Falcon integrates Intel® Threat Detection Technology to perform accelerated memory scanning, targeting malicious byte patterns and providing robust protection with endpoint detection and response, next-generation antivirus, threat hunting, and threat intelligence. Designed to safeguard endpoints like laptops, desktops, servers, and cloud workloads, the platform defends against a wide range of cyber threats, including malware, ransomware, and fileless attacks. With Intel and CrowdStrike, organizations can enhance their security to help protect against even the most sophisticated attacks with improved performance and less CPU utilization.

## Key Intel-Enabled Features



Single Platform,  
Console, and Agent



Cloud-Native  
Architecture



Open and Extensible  
Ecosystem



Advanced  
Memory Scanning

## The Intel Difference

Developed and optimized with Intel Core Ultra processors, the OpenVINO toolkit, and Intel Arc A-series graphics to help provide users:

- Enhanced memory scanning
- Improved overall performance
- Reduced CPU utilization for more efficient operations

### Ordering Guidance:

- [CrowdStrike Products](#)

Country/Geo: Global

### Learn more:

- [CrowdStrike Website](#)
- [CrowdStrike Advance Endpoint Security Through AI & Intel NPU Acceleration Article](#)
- [CrowdStrike Enhances Fileless Attack Detection with Intel Memory Scanning Article](#)

accelerated by **intel.**

### Intel Products and Technologies

- [Intel Core Ultra Processors Website](#)
- [Intel vPro Processors Product Page](#)
- [Intel Threat Detection Technology Page](#)
- [The AI PC Powered by Intel Page](#)



*By leveraging the advanced capabilities of Intel's hardware, we are able to unlock new levels of performance, efficiency, and scalability, ensuring that our customers stay ahead of the curve."*

Sreekumar Jairaj  
CEO of DheeYantra

#### Ordering Guidance:

- [Dhee.AI Contact Page](#)

Country/Geo: Global

#### Learn more:

- [Dhee.AI Webpage](#)
- [Dhee.AI's Edge Server for Telephony Achieves Breakthrough Optimization on Intel Architecture Article](#)

accelerated by **intel.**

# Dhee.AI

## Enhancing Customer Interactions with Custom Conversational and Regional AI

AI virtual agents facilitate customer conversations, helping businesses establish and maintain customer relationships. Dhee.AI facilitates seamless communication, assisting customers with their queries and e-transactions across various languages, specifically Indic languages. Powered by Intel® Core™ Ultra processors and optimized with the OpenVINO™ toolkit, the solution empowers businesses across industries to leverage the power of AI for enhanced efficiency, improving the customer journey and reducing the time employees spend answering simple customer questions. By leveraging Intel® Arc™ A-series graphics, Dhee.AI can improve the performance of AI and media processing workloads at the edge. The solution can handle compute-intensive telecommunications tasks such as speech recognition and synthesis, as well as providing a chat bot for online interactions. With 24/7 multilingual customer service, emotion detection, conversation tracking, and trainable chatbots, businesses can use Dhee.AI to personalize and improve customer engagement and experiences.

### Key Intel-Enabled Features



Social Media  
Support



Emotion Detection



Easy Conversation  
Tracking



Customized  
Chatbots

#### Intel Products and Technologies

- [Intel Core Ultra Processors Website](#)
- [Intel Arc Graphics Website](#)
- [OpenVINO Toolkit Website](#)
- [The AI PC Powered by Intel Page](#)

### The Intel Difference

Developed and optimized with Intel Core Ultra processors, the OpenVINO toolkit, and Intel Arc A-series graphics to help provide users:

- Faster generative AI
- Improved latency for concurrent streams
- Reduced operational cost through power savings



Back to AI PC  
Partner Applications



# GIMP - GNU Image Manipulation Program

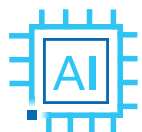
Empowering Users With AI Text-to-image Generation

Photo editing is a time-intensive task for graphic designers, photographers, and illustrators, typically requiring expensive editing software. GIMP is a free, open-source photo editor that provides users the tools they need for high quality image manipulation. GIMP empowers users to perform basic image editing tasks easily, without needing advanced skills. It also offers customization options and third-party plugins to further enhance user productivity.

GIMP now offers AI text-to-image generation to help artists get a jump start on projects and bring their imagination to life. This feature is deeply optimized to take advantage of Intel® processors and allows users to quickly generate an image from simple text prompts describing what to include in the image, and what to exclude from the image. These images are generated locally to maintain privacy and IP rights.

*Get up to  
**65% faster**  
generative AI  
workload  
performance with  
Intel® Core™ Ultra  
processors over  
13th Gen Intel®  
Core™ processors.<sup>1</sup>*

## Key Intel-Enabled Features



Stable Diffusion  
Based Text-to-  
Image Generation



OpenVINO AI  
Plugin for Super  
Resolution



OpenVINO AI  
Plugin for Semantic  
Segmentation



Multilingual  
Code Support

### Intel Products and Technologies

- [Intel® Core™ Ultra Processors Product Page](#)
- [Intel® Core™ Processors Product Page](#)
- [Intel® Distribution of OpenVINO™ Toolkit Product Page](#)
- [The AI PC Powered by Intel Page](#)

## The Intel Difference

Developed and optimized with Intel® Core™ Ultra processors to provide users:

- Faster performance when using AI text prompts to generate images
- Increased processing speed and graphics performance
- Local processing on Intel saves costs from cloud services

### Ordering Guidance:

- [GIMP Free Download Webpage](#)

Country/Geo: Global

### Learn more:

- [GIMP - GNU Image Manipulation Program](#)

accelerated by **intel.**

<sup>1</sup>As measured by a text-to-image generative AI workload using an Intel plugin for GIMP with Stable Diffusion on an Intel® Core™ Ultra 7 processor i65H vs. a 13th Gen Intel® Core™ i7-1370P processor. See [intel.com/performanceindex](https://www.intel.com/performanceindex) for details. Results may vary.

# VEGAS Pro 22

Delivering Advanced AI Functionality for Professional Filmmakers

Back to AI PC  
Partner Applications



*Our apps heavily use the GPU for demanding media processing workloads. VEGAS appreciates the integration of an NPU in the new Intel Core Ultra processor as the next logical step towards an even more energy-efficient heterogenous compute environment."*

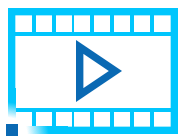
Hagen Hirche,  
CTO, VEGAS

Today's video editing software advancements place heavy strain on processors, often compromising performance and reducing efficiency. VEGAS Pro 22 leverages Intel® Core™ Ultra processors with significant power per watt to provide a smooth editing experience with notable power efficiency. Specifically designed for these processors, VEGAS Pro 22 fully leverages the disaggregated architecture, which includes individual tiles for compute, graphics, SoC, and I/O. With the processor's built-in NPU and integrated Intel® Arc™ Graphics, the solution drives hardware acceleration for compute-intensive tasks, reducing processing times and hardware strain for faster, more efficient editing and innovative AI visual effects at low power costs. This includes depth mapping, smart masking, and image upscaling for full creative control optimized by AI assist. VEGAS Pro 22 transforms RAW HDR source material with Intel® Quick Sync Video, offering extensive image and color editing capabilities while reducing overall rendering times. The ongoing collaboration between VEGAS and Intel enables creatives to bring their vision to life faster right on their PC.

## Key Intel-Enabled Features



AI Image  
Analysis & Assist



Full HDR Support



8K Support &  
AI Upscaling



Rendering  
Acceleration

## Intel Products and Technologies

- [Intel Core Ultra Processors Product Page](#)
- [Intel Arc Graphics Product Page](#)
- [Intel Distribution of OpenVINO toolkit Product Page](#)
- [The AI PC Powered by Intel Page](#)

## The Intel Difference

Developed and optimized with Intel Core Ultra processors and Intel Arc Graphics to provide users:

- Up to 2x boost in graphics performance compared to prior generations<sup>1</sup>
- Improved responsiveness and accelerated AI workloads for faster editing
- Integral support for HDR visuals
- Reduced import and export time

Experience VEGAS with a 30-day free trial:

- [VEGAS Pro | Free Trials](#)

Country/Geo: Global

Learn more:

- [VEGAS Pro | VEGAS](#)
- [MAGIX VEGAS Pro Solution Brief | Intel](#)

accelerated by **intel.**

<sup>1</sup>Based on higher average FPS measured on Baldur's Gate 3 compared to prior gen. Intel Arc GPUs only available on select Intel Core Ultra H-series processor-powered systems with at least 16GB of system memory in dual channel configuration. See [intel.com/performanceindex](https://www.intel.com/performanceindex) for details. Results may vary.





Back to AI PC  
Partner Applications



*We are thrilled to collaborate with Intel to integrate Solar LLM directly into their high-performance processors, demonstrating how built-in AI capabilities can elevate edge computing experiences to new heights.”*

Sung Kim  
CEO and Co-Founder of Upstage

#### Download Guidance:

- [WriteUp Download Webpage](#)

Country/Geo: Global

#### Learn more:

- [Solar LLM — Upstage Website](#)
- [Upstage Optimizes LLM for Intel Core Ultra Processors Blog Post](#)
- [On-Device LLM: Revolutionizing AI with Upstage’s WriteUp for Offline Use Blog Post](#)

accelerated by **intel.**

# WriteUp Application on Solar LLM

Driving Large Language Models Performance For Improved On-device AI Experiences

In a world reliant on web-based AI services, AI's convenience often hinges on internet connectivity. Upstage's flagship large language model, Solar Mini, eliminates that dependency by providing a small LLM that can run locally on user devices, even in remote or travel scenarios. Solar Mini is a versatile large language model tailored for various natural language processing tasks, including understanding, summarizing, translating, and content prediction in English, Korean, and Japanese. Leveraging Intel® Core™ Ultra processors with dedicated neural processing units (NPU), Solar Mini powers WriteUp, an on-device writing assistant for Windows PCs. Processing data locally, WriteUp ensures privacy, reduces latency, and cuts the need for cloud connectivity, lowering operational expenses. The app offers tools for writing tasks with options like tone adjustment, length control, emoji usage, and language settings. With Intel Core Ultra and model quantization techniques, WriteUp optimizes memory and processing speed, making it ideal for limited internet access. Partnering with Intel, WriteUp delivers a connected AI experience, ensuring advanced AI tools are accessible on Windows PCs while maintaining high privacy and performance standards.

## Key Intel-Enabled Features



Enhanced Privacy & Security



Tailored AI Writing Support



Local Processing



Memory Optimization & Processing Speed

#### Intel Products and Technologies

- [Intel Core Ultra Processors Website](#)
- [The AI PC Powered by Intel Page](#)

## The Intel Difference

Developed and optimized with Intel Core Ultra processors to provide users:

- Offline AI capabilities
- Increased processing speed and LLM performance
- Increased productivity with accelerated on-device document processing



Back to AI PC  
Partner Applications

# Wondershare Filmora

Empowering Creators with a Fully-Equipped Video Editing Suite Powered by AI

Video editing can be both time consuming and complex, with a steep learning curve due to the wide array of platforms, tools, and settings. Wondershare Filmora offers a simple alternative with an intuitive, user-friendly platform for both beginners and intermediate creators. The solution harnesses advanced Intel® hardware and AI capabilities, including Intel Core Ultra processors and the OpenVINO™ toolkit, to free creators from repetitive tasks through automation. This not only enhances efficiency and enables more room for creative, value-added tasks, but also helps drive time and cost savings. Filmora offers AI-powered features like text-based editing, motion tracking, keyframing, speech-to-text, and multicolor trailing. With 4K video editing and AV1 exporting, the solution helps preserve the best image quality at a smaller and more efficient file size. With Filmora and Intel® technology, creatives can easily transform unrefined footage into compelling videos, enjoying a seamless, all-in-one editing experience that empowers them to craft their story exactly the way they envision it.



*Filmora is excited to empower our 100M+ users with the amazing AI features powered by the new Intel® processors. By harnessing the full AI capabilities of the Intel® Core™ Ultra processor across the CPU, GPU, and the innovative NPU, we assist users in enhancing, streamlining, and unleashing their creative potential, allowing them to craft captivating videos effortlessly"*

Shearer Wang  
Product Marketing  
Director

## Key Intel-Enabled Features



Clone Ghost



Motion Tracking



AI Music Generator



AI Thumbnail  
Creator

## The Intel Difference

Developed and optimized with Intel Core Ultra processors and the OpenVINO toolkit to help provide users:

- Up to 13% faster AI video editing performance<sup>1</sup>
- Streamlined workflows and simplified processes
- Advanced AI-powered features and automation

### Intel Products and Technologies

- [Intel Core Ultra Processors Product Page](#)
- [OpenVINO Toolkit Product Page](#)
- [The AI PC Powered by Intel Page](#)

### Ordering Guidance:

- [Wondershare Filmora Download Page](#)

Country/Geo: Global

### Learn more:

- [Wondershare Filmora Website](#)
- [Wondershare Official Website](#)
- [Intel and Wondershare Filmora: Video Editing and Creation Powered by AI](#)

accelerated by **intel.**

<sup>1</sup>As measured by system on chip (SOC) package power on XSplit VCam during background removal, auto-framing, enhanced lighting, and chair removal on an NPU with an Intel® Core™ Ultra 7 processor 165H vs. a 13th Gen Intel® Core™ i7-1370P processor. See intel.com/performanceindex for details. Results may vary.



XSplitt VCam  
VCam

## Enhancing Collaboration and Streaming with High Quality AI Background Removal

Back to AI PC  
Partner Applications



*We are incredibly eager to reap the fruits of our ongoing work with Intel to integrate Intel NPU functions into XSplitt VCam, as having the ability to offload background segmentation and other AI workloads to the NPU is critical to achieve a higher video quality on business hardware. By utilizing a larger AI model running on the Intel NPU, we are able to reduce background removal inaccuracies on live video by up to 30%, while at the same time significantly reducing the overall load on the CPU and GPU..."*

Andreas Hoyer  
CEO, XSplitt

XSplitt VCam enables background removal, replacement, and blurring with any webcam, without the need for expensive green screens or complicated lighting setups. Whether for professional streaming or everyday video conferencing, users can leverage their existing webcam setup to achieve greenscreen-quality background removal without compromising performance. This high-quality AI background removal was designed specifically for Intel® Core™ Ultra Processors which include Neural Processing Units (NPU). By running on the NPU, XSplitt VCam shifts the workload almost entirely away from the CPU and GPU, while at the same time running an even higher-powered AI model that reduces background removal inaccuracies and drastically lowers CPU and GPU utilization. XSplitt VCam supports JPEGs, GIFs, PNGs or even full web pages, giving users virtually unlimited personalization options for background replacement. Users can also apply a blur to these backgrounds to help them look their best on video calls, without impacting application performance.

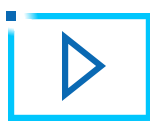
### Key Intel-Enabled Features



Background  
Removal



Background  
Replacement



Auto-framing

### The Intel Difference

Developed and optimized with Intel Core Ultra processors to provide users:

- Up to 40% less power<sup>1</sup>
- Reduced background removal inaccuracies and drastically lowered CPU and GPU utilization
- Increased processing speed and graphics performance available to other apps

### Intel Products and Technologies

- [Intel Core Ultra Processors Product Page](#)
- [The AI PC Powered by Intel Page](#)
- [Intel® NPU Driver for Windows Product Page](#)
- [Intel® Distribution of OpenVINO™ toolkit Product Page](#)

### Ordering Guidance:

- [XSplitt VCam Download Page](#)

Country/Geo: Global

### Learn more:

- [Livestreaming and Webcam Enhancement Tools | XSplitt Webpage](#)
- [Intel® and XSplitt Broadcaster and XSplitt VCam powered by AI | Intel Webpage](#)

accelerated by **intel.**

<sup>1</sup>As measured by system on chip (SOC) package power on XSplitt VCam during background removal, auto-framing, enhanced lighting, and chair removal on an NPU with an Intel® Core™ Ultra 7 processor i65H vs. a 13th Gen Intel® Core™ i7-1370P processor. See intel.com/performanceindex for details. Results may vary.





# ZenoChat

Unifying Digital and Voice Interactions for Employees

[Back to AI PC Partner Applications](#)

Addressing the unique challenges in Life Sciences and Biotech Manufacturing, Vistry offers ZenoChat, an AI virtual assistant designed to support operational efficiency and employee engagement. ZenoChat provides instant access to critical operating procedures and protocols, ensuring that staff can quickly and accurately adhere to regulatory and safety standards. This AI-driven solution streamlines key operations such as onboarding and training, allowing staff to ask specific questions about manufacturing processes, HR benefits or regulatory compliance requirements and receive immediate, precise guidance. Vistry's ZenoChat supports multilingual capabilities, delivering step-by-step instructions for consistent, efficient operations. By integrating Intel® technologies like Intel® Core™ Ultra processors, Intel® Xeon® Scalable processors, and the OpenVINO™ toolkit, ZenoChat ensures high-speed edge to cloud processing, offering a seamless and responsive user experience that enhances productivity and compliance in life sciences manufacturing environments.



*Utilizing the advanced capabilities of Vistry's AI... our solution enhances employee interactions by providing instant access to vital HR documents and support through a user-friendly Teams interface. This initiative demonstrates our commitment to leveraging cutting-edge technology to improve operational efficiency and employee satisfaction... Collaborating with industry leaders like Microsoft and Intel, we continue to drive innovation and deliver impactful AI-driven solutions."*

Atif Kureishy  
Vistry CEO & Founder

## Key Intel-Enabled Features



Instant Access To  
Manuals & Procedures



Rapid Employee  
Query Response



Efficient Onboarding  
& Training



AI-Driven  
Language Support

## The Intel Difference

Developed and optimized with Intel Core Ultra processors, Intel Xeon Scalable processors, and the OpenVINO toolkit to provide users:

- Accelerated response times
- Improved accuracy
- Enhanced user experience
- Operational cost efficiency

### Intel Products and Technologies

- [Intel Core Ultra Processors Product Page](#)
- [Intel Distribution of OpenVINO toolkit Product Page](#)
- [The AI PC Powered by Intel Page](#)
- [Intel Xeon Scalable Processors Product Page](#)

### Ordering Guidance:

- [Vistry Pricing Product Page](#)

Country/Geo: Global

### Learn more:

- [Vistry AI Website](#)
- [ZenoChat Product Webpage](#)
- [Enhancing ZenoChat with Intel's OpenVino and the "AI PC" blog post](#)







Zoom

## Strengthening Collaboration with AI-Powered Distraction Mitigation

Back to AI PC  
Partner Applications



*Zoom is proud to partner with Intel on delivering ways in which human-to-human interaction becomes more meaningful, processes become more streamlined, and communication with coworkers, teams, and customers becomes more effective."*

Mahesh Ram  
Head of AI Products, Zoom

Zoom helps people collaborate better together in the boardroom, classroom, operating room, and everywhere in between. To ensure customer satisfaction through a superior video conferencing platform, Zoom has optimized select AI features for Intel architecture. These features can help mitigate on-call distractions, enable users to look and sound their best in meetings, and enrich user experience. Meeting participants can quickly remove, replace, or blur their background without the need for expensive greenscreens, lighting, or additional filter applications. The platform can also intelligently identify and automatically remove distracting background noise, providing critical clarity needed in digital communication. With the new portrait lighting setting, Zoom's built-in AI helps illuminate users' faces in poor lighting. This feature allows Zoom to dim backgrounds while brightening users in the foreground, making users stand out more in their meetings. This is available through in-app video settings and has hardware prerequisites similar to using virtual backgrounds without a greenscreen. By leveraging Intel architecture, Zoom provides users with an AI-enhanced collaboration experience, while using less power on calls.

### Key Intel-Enabled Features



Background Removal  
and Replacement



Noise Suppression/  
Echo Cancellation



Portrait Lighting

### The Intel Difference

Developed and optimized for Intel® Core™ Ultra processors and Intel NPU driver to provide users:

- Enhanced AI collaboration experience at lower power
- Better user experience with fewer background and noise distractions
- Increased processing speed and graphics performance

#### Intel Products and Technologies

- [Intel Core Ultra Processors Website](#)
- [Intel® Core™ Processors Product Page](#)
- [The AI PC Powered by Intel Page](#)
- [Intel® Linux NPU Driver Github Page](#)
- [Intel® NPU Driver - Windows\\* Product Page](#)

#### Ordering Guidance:

- [Zoom Plans & Pricing Webpage](#)

Country/Geo: Global

#### Learn more:

- [Zoom Website](#)

accelerated by **intel**

# Legal Notices and Disclaimers

Performance varies by use, configuration and other factors. Learn more at [intel.com/performanceindex](https://intel.com/performanceindex).

Performance results are based on testing as of dates shown in configurations and may not reflect all publicly available updates. See backup for configuration details. No product or component can be absolutely secure.

Intel does not control or audit third-party data. You should consult other sources to evaluate accuracy.

AI features may require software purchase, subscription or enablement by a software or platform provider, or may have specific configuration or compatibility requirements. Details at [intel.com/AIPC](https://intel.com/AIPC). Results may vary.

Intel® Arc™ graphics only available on select H-series Intel® Core™ Ultra processor-powered systems with at least 16GB of system memory in a dual-channel configuration. OEM enablement required; check with OEM or retailer for system configuration details.

Your costs and results may vary.

Intel technologies may require enabled hardware, software or service activation.

© Intel Corporation. Intel, the Intel logo, Intel Core Ultra, Intel Core, Intel vPro, Intel Distribution of OpenVINO toolkit, Intel Arc, and other Intel marks are trademarks of Intel Corporation or its subsidiaries. Other names and brands may be claimed as the property of others.