



Windows* Server 2016 for Intel® Server Board S2600WF, S2600BP and S2600ST Product Families

Installation Guide

Detailed instructions to successfully install Windows* Server 2016 on the Intel® Server Board S2600WF, S2600BP and S2600ST product families.

Rev 1.00

July 2017

<Blank page>

Document Revision History

Date	Revision	Changes
July 2017	1.00	First Public Release

Disclaimers

Intel technologies' features and benefits depend on system configuration and may require enabled hardware, software, or service activation. Learn more at Intel.com, or from the OEM or retailer.

You may not use or facilitate the use of this document in connection with any infringement or other legal analysis concerning Intel products described herein. You agree to grant Intel a non-exclusive, royalty-free license to any patent claim thereafter drafted which includes subject matter disclosed herein.

No license (express or implied, by estoppel or otherwise) to any intellectual property rights is granted by this document.

The products described may contain design defects or errors known as errata which may cause the product to deviate from published specifications. Current characterized errata are available on request.

Intel disclaims all express and implied warranties, including without limitation, the implied warranties of merchantability, fitness for a particular purpose, and non-infringement, as well as any warranty arising from course of performance, course of dealing, or usage in trade.

Copies of documents which have an order number and are referenced in this document may be obtained by calling 1-800-548-4725 or by visiting www.intel.com/design/literature.htm.

Intel and the Intel logo are trademarks of Intel Corporation or its subsidiaries in the U.S. and/or other countries.

*Other names and brands may be claimed as the property of others.

Copyright © 2017 Intel Corporation. All rights reserved.

Table of Contents

1. Introduction	6
1.1 How to use this guide.....	6
1.2 Assumptions.....	6
2. Step-by-Step Procedure	7
2.1 Installing Windows* Server 2016.....	7
2.2 Updating drivers.....	7
Appendix A. Glossary	9

List of Figures

Figure 1. Complete the installation as usual.....	7
Figure 3. Windows* Server 2016 Interface.....	7
Figure 5. Update the ASPEED* Windows* video driver.....	8
Figure 6. Device Manager.....	8

List of Tables

Table 1. System Update Package (SUP) firmware prerequisites.....	6
--	---

1. Introduction

1.1 How to use this guide

This document details step-by-step instructions to successfully install Windows* Server 2016 when local video graphics features are required (use of the optimized ASPEED* graphics controller).

If local video graphics features are not required (for example, in headless or remote management environments), follow the installation procedure only (section 2.1). The driver update is not required in these environments.

Table 1. System Update Package (SUP) firmware prerequisites

Item	Version
BIOS	R0001 or later
Intel® ME	04.00.03.202 or later
FRUSDR	1.00 or later
BMC	1.00 or later
Operating System	Windows Server 2016 RTM or later

1.2 Assumptions

The following are made for the procedure to succeed.

- The server condition is in a healthy state.
- Windows* Server 2016 “Desktop Experience” (formerly “Server with a GUI”) is being installed locally.
 - The ASPEED* Windows* video driver package v1.03 is downloaded from http://upload.aspeedtech.com/BIOS/Win2016_v103.zip and the extracted folders stored at the root of a removable media (i.e. USB drive).

2. Step-by-Step Procedure

2.1 Installing Windows* Server 2016

Use the following procedure to install Windows* Server 2016.

1. Boot from the Windows* Server 2016 installation source / media
2. Complete the “Desktop Experience” installation as usual, either the Standard or Datacenter editions

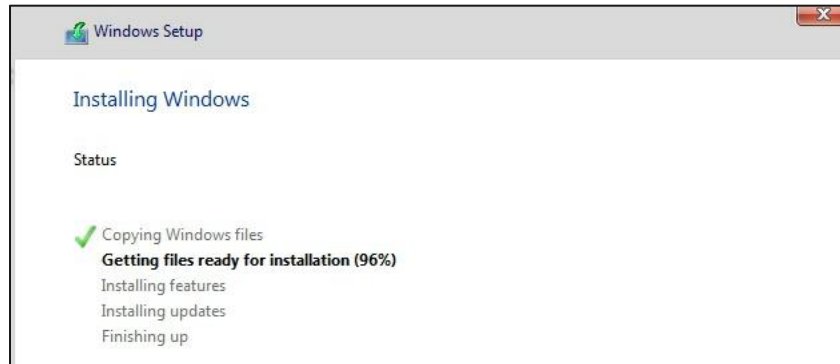


Figure 1. Complete the installation as usual

2.2 Updating drivers

Follow these steps to update the ASPEED* video driver.

1. Start and log-in to Windows* Server 2016. The Windows* built-in video driver is used and graphics will be displayed.

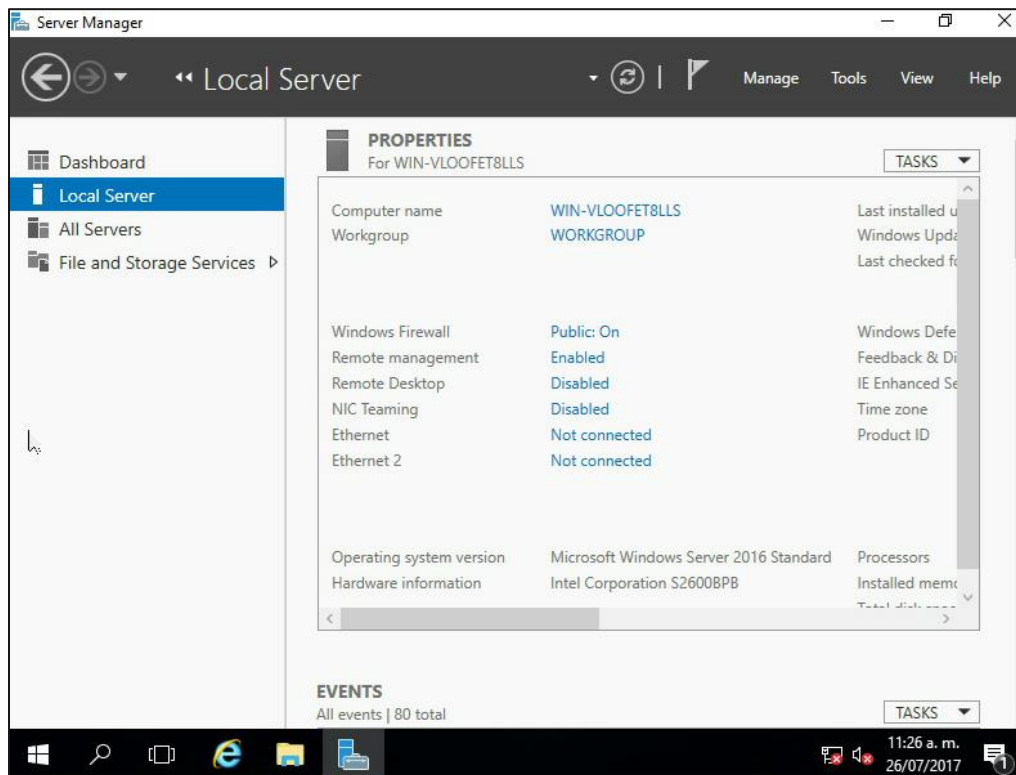


Figure 2. Windows* Server 2016 Interface

2. Insert the removable media with the ASPEED* Windows* video driver package v1.03. After extraction of the zip file is complete, navigate to the **WDDM Installer** folder and run the `Win2016.msi` file, follow the prompts to complete the installation.

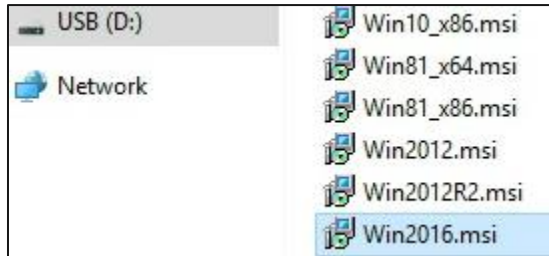


Figure 3. Update the ASPEED* Windows* video driver

3. Confirm the driver has been successfully installed by opening Device Manager >> Display Drivers and recognize the **ASPEED Graphics Family (WDDM)** driver presence



Figure 4. Device Manager

4. Reboot the server. The ASPEED* Windows* video driver update is now complete.

Appendix A. Glossary

Term	Definition
BIOS	Basic Input/Output System
BMC	Baseboard Management Controller
FRUSDR	Field Replaceable Unit/Sensor Data Record
Intel® ME	Intel® Management Engine